



SMART DIAMOND
— TOOLS PTY LTD —



**FLOOR GRINDING /
POLISHING
PRODUCT
CATALOGUE 2020**

4 / GRINDING MACHINES

Quality floor grinding machines at amazing prices.

9 / SCARIFIERS

Remove concrete and coatings faster and more effectively with our scarifying machines.

11 / HANDHELD GRINDERS/ POLISHERS

We have a HUGE range of angle grinders, handheld grinders and polishers to suit all needs! See our best sellers here...

13 / WERKMASTER

SmartDiamond Tools is the Australian distributor of WerkMaster's award winning products, systems and solutions for concrete, stone & terrazzo refinishing. Check them out here!

15 / GRINDING SHROUDS

Biggest range of 5" and 7" dust shrouds for your angle grinder.

17 / ADAPTOR PLATES

Save time and money with our universal slide-on system on your machine.

18 / GRINDING SHOES

Join the rest of Australia in saving money on your grinding consumables.

21 / CUP WHEELS

Check out one of the largest ranges of cup wheels available down under.

28 / GRINDING PLATES / WEDGE BLOCKS

Kit out your old school machines with our top quality diamonds.

29 / CORNER GRINDING / POLISHING

Q: What do I do with these rotten corners?

A: Read page 29 of this catalogue.

31 / GRINDING PLUGS

Plug your Terrco or Floorex with the best range you will find in Oz.

32 / POLISHING MACHINES

Polivac polishing machines to make that final finish pop.

21 / CUP WHEELS

Check out one of the largest ranges of cup wheels available down under.

34 / MULTIPLATE

Convert your Polivac floor polisher to a multi-purpose concrete preparation machine.

36 / POLISHING PUCKS / FLOOR PADS

Use Smart's tried and tested pucks to bring the gloss to the next level. Finish your floor the right way with our range of 17" and 20" pads.



Contact us for a price list today!



SMART DIAMOND
— TOOLS PTY LTD —

**GRINDING /
POLISHING
TOOLS**

Contact us for a
price list
today!

ABOUT Smart Diamond Tools

Smart Diamond Tools is a leading manufacturer and supplier of high quality diamond tools and machinery. Australian owned and family run, we established in Melbourne in 1989 and have been supplying the concreting and construction industries throughout Australia for 30 years. Visit us in store or call now on 1300 763 328 for Australia wide delivery.



Free shipping for orders over \$400 (*excludes machinery, liquids & adaptor plates)



WANT RELIABILITY? POWER? EUROPEAN QUALITY? THE BEST WARRANTY & AFTER SALES SERVICE?

- ✓ *High torque gear-driven planetary system*
- ✓ *5 year replacement warranty on gearbox (*conditions apply)*
- ✓ *2 year bumper to bumper warranty*
- ✓ *Top quality Siemens motor and Schneider inverter (520mm uses Taiwan Teco inverter)*
- ✓ *Highest quality Japanese bearings and oil seals*
- ✓ *Eton brand switches*
- ✓ *LED headlight and USB charging port as standard*
- ✓ *20% more efficient than popular belt-driven grinders*

Built tough for the Australian market!



Redback 450mm
3-head planetary floor grinder

Features top quality Siemens motor, Schneider inverter, highest quality Japanese bearings and oil seals, Eton brand switches, LED headlights and USB charging port. 5 year replacement warranty on gearbox (conditions apply) and 2 year bumper to bumper warranty.

| | |
|---------------------------|-------------------|
| Motor: | 4HP |
| Voltage: | Single phase 240V |
| Work Area: | 450mm |
| Grinding Pressure: | 110kg |
| Speed: | 0-1200rpm |
| Weight: | 168kg |
| Dimensions: | 862x460x950mm |



Redback 520mm
3-head planetary floor grinder

Features top quality Siemens motor, Taiwan Teco inverter, highest quality Japanese bearings and oil seals, Eton brand switches, LED headlight and USB charging port. 5 year replacement warranty on gearbox (conditions apply) and 2 year bumper to bumper warranty.

| | |
|---------------------------|-----------------|
| Motor: | 5HP |
| Voltage: | 3-phase 415V |
| Work Area: | 520mm |
| Grinding Pressure: | 130kg |
| Speed: | 0-1200rpm |
| Water Tank: | 20L |
| Weight: | 220kg |
| Dimensions: | 1060x520x1200mm |

GRINDING MACHINES



All also available in
SELF-PROPELLED
and REMOTE
CONTROL versions



Redback 650mm
3-head planetary floor grinder



Redback 760mm
3-head planetary floor grinder



Redback 760mm
4-head planetary floor grinder

All feature top quality Siemens motor, Schneider inverter, highest quality Japanese bearings and oil seals, Eton brand switches, LED headlight and USB charging port. 5 year replacement warranty on gearbox (conditions apply) and 2 year bumper to bumper warranty.

| | |
|--------------------|-----------------|
| Motor: | 10HP |
| Voltage: | 3-phase 415v |
| Work Area: | 650mm |
| Grinding Pressure: | 206kg |
| Speed: | 0-1200rpm |
| Water Tank: | 25L |
| Weight: | 350kg |
| Dimensions: | 1170x650x1200mm |

| | |
|--------------------|-----------------|
| Motor: | 15HP |
| Voltage: | 3-phase 415v |
| Work Area: | 760mm |
| Grinding Pressure: | 300kg |
| Speed: | 0-1200rpm |
| Water Tank: | 30L |
| Weight: | 450kg |
| Dimensions: | 1360x760x1300mm |

| | |
|--------------------|-----------------|
| Motor: | 15HP |
| Voltage: | 3-phase 415v |
| Work Area: | 760mm |
| Grinding Pressure: | 300kg |
| Speed: | 0-1200rpm |
| Water Tank: | 30L |
| Weight: | 500kg |
| Dimensions: | 1360x760x1300mm |

GRINDING MACHINES



Redback 1520mm
8-head ride-on floor grinder

The largest gear-driven ride-on floor grinding machine available, with a 1520mm work area. Easy to operate and incredibly effective at completing large areas in a short time. Features integrated dust extraction system and additional weight to adjust head pressure.

| | |
|--------------------|-------------------|
| Motor: | 2 x 15HP |
| Voltage: | 3-phase 415v |
| Speed: | 0-1200rpm |
| Vacuums: | 2 x 10HP attached |
| Weight: | 1800kg |
| Dimensions: | 1520x1930mm |



Redback Edge Grinder
300mm edge grinder

Precision designed edge grinding machine with the body and grinding head adjustable to 45 degrees. Features a unique electrical lifting system for rear wheels, dust collection port, adjustable handle and guiding device.

| | |
|--------------------|-------------------|
| Motor: | 4HP (3KW) |
| Voltage: | Single phase 220v |
| Speed: | 0-1200rpm |
| Weight: | 120kg |
| Dimensions: | 1175x485x900mm |

GRINDING MACHINES

The best value small grinder on the market!!



A250B
10" (250mm) floor grinder

Compact 250mm floor grinder for wet and dry applications. Easy to transport with its compact size and foldable handle. Head can be turned 80 degrees left or right, enabling easy grinding close to walls. Features a detachable dust shroud, vacuum port and water port.

| | |
|-------------|---------------|
| Motor: | 3HP (2.2KW) |
| Speed: | 1410rpm |
| Weight: | 67kg |
| Dimensions: | 825x432x860mm |



A340
340mm floor grinder

Compact and robust single head floor grinder, ideal for small to medium grinding jobs. 340mm wide grinding head. Features a pre-installed adaptor plate to enable use of AuSKut's slide-on diamonds.

| | |
|-------------|----------------|
| Motor: | 3HP (2.2KW) |
| Speed: | 650rpm |
| Weight: | 100kg |
| Dimensions: | 900x400x1000mm |

SCARIFIERS



SCR200P
8" petrol scarifier

Honda petrol walk-behind scarifying machine ideal for coating removal, creating non-slip surfaces, floor preparation and road maintenance. For use with our M200 drum.

| | |
|-----------------------|-------------------|
| Motor: | Honda GX160 5.5HP |
| Working Width: | 200mm |
| Working Depth: | 3-5mm |
| Weight: | 61kg |
| Dimensions: | 1650x480x950mm |



SCR200H4
8" heavy duty petrol scarifier

Honda petrol walk-behind scarifying machine ideal for coating removal, creating non-slip surfaces, floor preparation and road maintenance. Includes 4-shaft heavy duty drum (M200HD).

| | |
|-----------------------|-------------------|
| Motor: | Honda GX160 5.5HP |
| Working Width: | 200mm |
| Working Depth: | 3-5mm |
| Weight: | 105kg |
| Dimensions: | 820x490x810mm |



SCR250H9
10" petrol scarifier

Honda petrol walk-behind scarifying machine ideal for coating removal, creating non-slip surfaces, floor preparation and road maintenance. Includes extra heavy duty drum (M250).

| | |
|-----------------------|-----------------|
| Motor: | Honda GX270 9HP |
| Working Width: | 250mm |
| Working Depth: | 5-10mm |
| Weight: | 132kg |
| Dimensions: | 910x470x880mm |

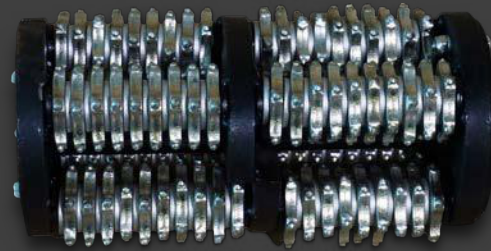


Optional edger assembly available

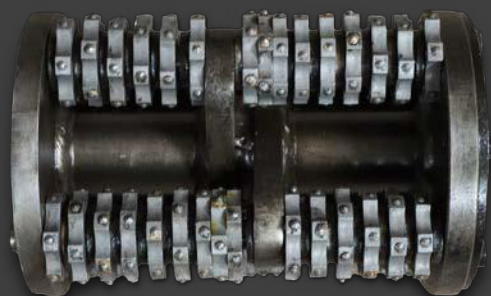
SCR200E
8" electric scarifier

Versatile electric scarifying machine ideal for sidewalk repair, coating and line removal, floor preparation and creating non-slip surfaces. For use with our M200 drum.

| | |
|----------------|---------------|
| Motor: | 240V 2.2KW |
| Working Width: | 200mm |
| Working Depth: | 2-3mm |
| Weight: | 60kg |
| Dimensions: | 820x490x810mm |



M200
8" carbide flail cutters cage assembly including drum, 76 x 6mm TCT cutters and 104 x washers. Replacement cutters available (sold separately).



M200HD4
8" carbide flail cutters cage assembly including drum and 60 x TCT cutters. Replacement cutters available (sold separately).



M250
10" carbide flail cutters cage assembly including drum and 90 x TCT cutters. Replacement cutters available (sold separately).



HAND-HELD GRINDERS/ POLISHERS

Smart Diamond Tools stocks an extensive range of quality angle grinders to suit all needs from the brands pictured below.

Call us on 1300 637 347 or check out the website for our current range.

metabo

DEWALT

HIKOKI

E E EIBENSTOCK

A sample of our best sellers...



Metabo W24-230MVT
230mm angle grinder

9" (230mm) grinder with Marathon motor and patented dust protection for long service life. Features deadman switch, tool-free adjustable guard, anti-vibration handle and rotating rear handle. Pictured with our 7ShroudH (sold separately).

Metabo WEV15-125INOX
125mm angle grinder

5" (125mm) robust, powerful grinder with high gear reduction and adjustable reduced speed for cool finish. Features Marathon motor, VTC full-wave electronics, M-quick tool-free disc change and S-automatic safety clutch. Pictured with Metabo GED125 shroud & D-handle (sold separately).

Metabo WEA17-125
125mm angle grinder

The power of a larger grinder and compactness of a small one for quickest material removal. Features Marathon motor, TC full-wave electronics, M-quick tool-free disc change and S-automatic safety clutch. Pictured with Metabo GED125 shroud and D-handle (sold separately).

| | |
|----------------|---------|
| Motor: | 2400W |
| No-Load Speed: | 6600rpm |
| Disc Diameter: | 230mm |
| Weight: | 5.8kg |

| | |
|----------------|--------------|
| Motor: | 1550W |
| No-Load Speed: | 2000-7600rpm |
| Disc Diameter: | 125mm |
| Weight: | 2.5kg |

| | |
|----------------|----------|
| Motor: | 1700W |
| No-Load Speed: | 11000rpm |
| Disc Diameter: | 125mm |
| Weight: | 2.5kg |

HAND-HELD GRINDERS/ POLISHERS



AG125
5" (125mm) concrete grinder

Features variable speed, load indicator, adjustable ergonomic handle, tool-free sliding cover for edge grinding and dust control skirt.

EP7FB
7" (180mm) wet/dry polisher

Suitable for wet or dry polishing of concrete and stone. Features variable speed, soft start and overload protection.

WETPOL5-900
5" (125mm) wet polisher

Suitable for wet polishing of concrete and stone. Features double transmission and variable speed.

| | |
|----------------|--------------|
| Motor: | 2200W |
| No-Load Speed: | 4300-7200rpm |
| Disc Diameter: | 125mm |
| Weight: | 4.7kg |

| | |
|----------------|--------------|
| Motor: | 2200W |
| No-Load Speed: | 1000-2400rpm |
| Disc Diameter: | 180mm |
| Weight: | 6kg |

| | |
|----------------|-------------|
| Motor: | 800W |
| No-Load Speed: | 700-3000rpm |
| Disc Diameter: | 125mm |
| Weight: | 4.5kg |

WERKMASTER MACHINES

Australian distributor of



WERKMASTER™
Ultra Floor Systems



WerkMaster Scarab
Handheld grinding/polishing machine

The ideal handheld machine for countertops, floors, stairs and ledges. Gets within 3mm of the wall! The 5 counter-rotating heads add stability and produce a superior finish. Features quick change tooling, dust control and optional water feature. Polisher and tooling sold separately.

| | |
|--------------------|---------------------|
| Footprint: | 310x200x180mm |
| Disc Size: | 76mm |
| Weight: | 20kg (w/o polisher) |
| Vacuum Req: | 100 CFM |



WerkMaster Edge
Edge grinder/polisher

A compact and powerful compliment to any large floor machine. Excellent for concrete edging, grinding, polishing and surface prep with 350mm work area. Gets within 3mm of the wall! Disassembles for easy transport. Features quick change tooling and dustless grinding when attached to appropriate dust extraction. Tooling sold separately.

| | |
|-----------------------|-------------|
| Motor: | 3HP 240V |
| No-load Speed: | 400-1000rpm |
| Disc Size: | 127mm |
| Weight: | 93.4kg |
| Vacuum Req: | 200 CFM |

MOHS HARDNESS TEST KIT

Determine the overall hardness or softness of your concrete or stone surface. Testing will save money, reduce diamond wear and decrease time spent. Provides a general guide only. Each kit comes with a storage case and range of picks.



WERKMASTER SCARAB TOOLING

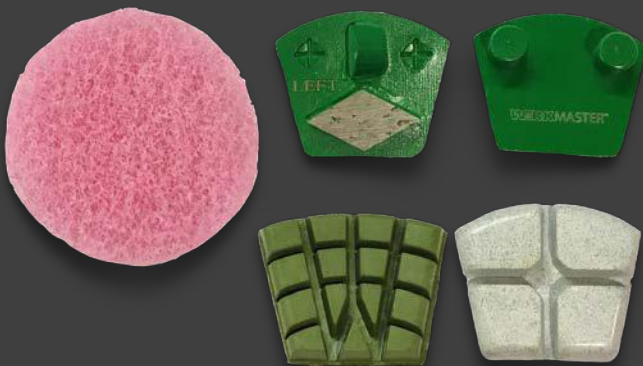
For use with the WerkMaster Scarab. Full range of 3" (76mm) diamond abrasive tooling, resins and buffing pads. Everything you need to remove coatings, grind, polish and refinish concrete, terrazzo and stone.



| | Description: | Code: |
|---------------------|--|---|
| Turbo Shark | 3 x 16G segs | W002-1428 |
| Teardrop | 3 x 30/40G segs 3 x 70/80G segs | W002-1524 W002-1525 |
| Achromic Pad | 100G | W003-0267 |
| Resin Pad | 200G 400G 800G 1500G 3000G | W003-0278 W003-0279 W003-0280 W003-0281 W003-0282 |
| Nylon Pad | Pink cleaning/buffing pad | W011-0015 |

WERKMASTER EDGE TOOLING

For use with the WerkMaster Edge. Full range of "plug n go" options including diamond abrasive tooling, resins and buffing pads. Everything you need to remove coatings, grind, polish and refinish concrete, terrazzo and stone.



| | Description: | Code: |
|---------------------|---|---|
| PCD + Shark | Anti-clockwise Clockwise | W002-1349 W001-1350 |
| Shark | 2 x 16G segs | W002-1413 |
| Standard | 1 x 16G seg 1 x 30/40G seg 1 x 70/80G seg | W002-1319 W002-1392 W002-1409 |
| Achromic Pad | 100G | W003-0247 |
| Resin Pad | 200G 400G 800G 1500G 3000G | W003-0236 W003-0237 W003-0238 W003-0239 W003-0240 |
| Nylon Pad | Pink buffing pad | W011-0042 |

5" Shrouds



5SHROUD

Suits 125mm grinder with a 50mm clamp. Hard plastic with bristle edge. Clip-off front for edge grinding. 38mm OD vacuum port.



5SHROUDC

Suits 125mm grinder with an adjustable clamp to fit 42-55mm. Clear hard plastic with bristle edge. Clip-off front for edge grinding. 35mm OD vacuum port.



5SHROUDG

Suits 125mm grinder. Hard plastic with bristle edge. Swing front for edge grinding. 32mm OD vacuum port.



5SHROUDM

Suits 125mm grinder with multiple clamp sizes available (39mm, 42mm, 46mm, 49mm). Steel with velcro/vinyl skirt. Not suitable for edge grinding. 33mm OD vacuum port.



DWE46150

DeWalt brand - suits 115mm and 125mm grinders with keyless clamp. Hard plastic with bristle edge. Swing front for edge grinding. AirLock vacuum port.

GRINDING SHROUDS

7" Shrouds



7SHROUD

Suits 180mm grinder and available in 2 clamp sizes (65mm, 75mm). Hard plastic with bristle edge. Clip-off front for edge grinding. 38mm OD vacuum port.



7SHROUDG

Suits 180mm grinder. Hard plastic with bristle edge. Swing front for edge grinding. 35mm ID vacuum port.



7SHROUDH

Suits 180mm grinder with an adjustable clamp to suit 65-75mm. Alloy. Lift-up door for edge grinding. 40mm OD vacuum port.



7SHROUDM

Suits 180mm grinder with multiple clamp sizes available (65mm, 75mm). Steel with velcro/vinyl skirt. Not suitable for edge grinding. 35mm ID vacuum port.



7SHROUDR

Suits 180mm grinder with rubber spacers to suit popular brands i.e. DeWalt, Makita, Milwaukee, Metabo & Bosch. Hard rubber with steel wear strip. Flip-up door for edge grinding. 58mm ID vacuum port.



7SHROUDITHRO

Suits 180mm grinder. Composite body with rubber diaphragm. Flip-up front for edge grinding. 35mm ID / 51mm OD vacuum port.



7SHROUDHOLM

Holer brand - suits 180mm grinder. Alloy construction. Flip-up front for edge grinding. 35mm ID / 51mm OD vacuum port.



DWE46170

DeWalt brand - suits 180mm grinders with keyless clamp. Rubber with steel wear strip. Flip-up front for edge grinding. AirLock vacuum port.

ADAPTOR PLATES

Replace your current grinding machine base plate with an Smart's adaptor plate to enable use of Smart's "Redi-Lock" style grinding shoes*. **SAVE TIME & MONEY** with our universal slide-on system!

*Adaptation of your machine is not guaranteed. Extra modification may be required.

CONBLAST6

6" (160mm) adaptor plate to suit Blastrac 435.



CONLAV9

9" (225mm) adaptor plate to suit Lavina 20.



CONH10

10" (250mm) universal adaptor plate to suit CUB Grinder, Crete Mower or Schwamborn DSM250.



CONTPG10

10" (250mm) adaptor plate to suit Meteor 250.



CONH12

12" (300mm) universal adaptor plate to suit Dimas machines.



CONTPG7

7" (180mm) adaptor plate to suit Satellite SP Active Planetary.



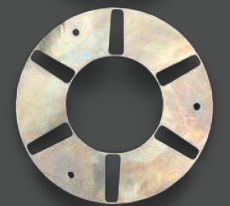
CONHTC270

270mm adaptor plate to suit HTC 800.



CONSCHPLATE 7, 8 & 9

7", 8" & 9" adaptor plates to suit Schwamborn DSM450, DSM530, DSM530S, DSM650 and DSM650S.



CONHTC6

6" (160mm) adaptor plate to suit HTC 420.



CONSMALLH

55x40mm small adaptors that can be fitted to most existing steel base plates.



CONHTC9

9" (230mm) adaptor plate to suit HTC 650.



JSADAPT

Adaptor plate to suit Jian Song (Topstone) grinders.



CONKLIN8 & 9

8" and 9" (230mm) adaptor plates to suit most Klindex machines.



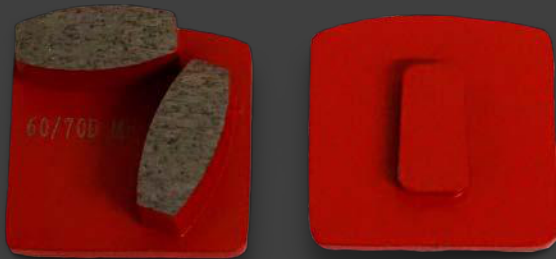
VELCROHS

3" (80mm) velcro slide-on plates to easily change over from diamonds to pucks or ceramics.



SAVE TIME & MONEY!!!

GRINDING SHOES



SAVE TIME & MONEY with Smart's universal slide-on system! Check out our range of adaptor plates to use these diamonds on your machine.

Best value grinding diamonds in Australia!!

PROFESSIONAL "REDI-LOCK" STYLE SHOES

Smart's range of professional slide-on diamonds, our most popular and best value for money! 13mm high coffin shaped segments. Available in single, double and triple segments, various grits and bonds (see chart).



| | | | | | | |
|-------------------|-------------------|-------------------|-----------------|--------------------|--------------------|--------------------|
| Extra Hard Floor | Very Hard Floor | Hard Floor | Medium Floor | Soft Floor | Very Soft Floor | Extra Soft Floor |
| XHF - Pink | VHF - Blue | HF - Black | MF - Red | SF - Yellow | VSF - Green | XSF - White |
| Extra Soft Bond | Very Soft Bond | Soft Bond | Medium Bond | Hard Bond | Very Hard Bond | Extra Hard Bond |

| | Single | Double | Triple |
|---------------------|---------------------------------|----------------------------------|---------------------|
| 16 Grit | HSRK16S VHF HF MF SF VSF | HDRK16S VHF HF MF SF VSF | |
| 20/25 Grit | HSRK25S XHF VHF HF MF SF VSF | HDRK25S VHF HF MF SF VSF | |
| 30/40 Grit | HSRK30S VHF HF MF SF VSF | HDRK30S XHF VHF HF MF SF VSF | H3RK30S XSF |
| 60/70 Grit | HSRK60S VHF HF MF SF VSF | HDRK60S VHF HF MF SF VSF | |
| 80 Grit | HSRK80S VHF HF MF SF VSF | HDRK80S VHF HF MF SF VSF | |
| 120/140 Grit | HSRK120S VHF HF MF SF VSF | HDRK120S XHF VHF HF MF SF VSF | |
| 160 Grit | | | H3RK160S XHF VHF |

GRINDING SHOES

| | | | | | |
|-------------------|-------------------|-------------------|-----------------|--------------------|--------------------|
| Extra Hard Floor | Very Hard Floor | Hard Floor | Medium Floor | Soft Floor | Very Soft Floor |
| XHF - Pink | VHF - Blue | HF - Black | MF - Red | SF - Yellow | VSF - Green |
| Extra Soft Bond | Very Soft Bond | Soft Bond | Medium Bond | Hard Bond | Very Hard Bond |

TRADE "REDI-LOCK" STYLE SHOES

Our trade range of slide-on diamonds for the budget conscious. 13mm high hexagon shaped segments. Available in single or double segments, various grits and bonds (see chart).



| | Single | Double |
|---------------------|-----------------------------|-----------------------------|
| 30/40 Grit | HSRK30T VHF HF MF SF VSF | HDRK30T VHF HF MF SF VSF |
| 60/70 Grit | HSRK60T VHF HF MF SF | HDRK60T HF MF SF |
| 120/140 Grit | | HDRK120T HF MF SF |

ARROW SEGMENTS

Professional slide-on diamonds with 15mm high arrow shaped segments for coatings removal. Available in single and double segments, 25 grit, various bonds (see chart).



| | Single | Double |
|----------------|------------------------|-----------------------|
| 25 Grit | AAS80S HF MF SF VSF | AAS80 HF MF SF VSF |

STEP SEGMENTS

Professional slide-on diamonds with 11mm high step shaped segments aggressive grinding and coatings removal. Available in single or double segments, 25 grit, various bonds.

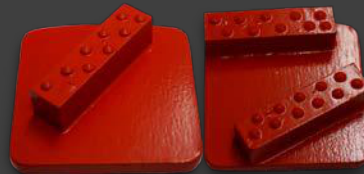


| | Single | Double |
|----------------|--------------------|------------------------|
| 25 Grit | HSRKSTEP XHF MF | HDRKSTEP XHF MF VSF |

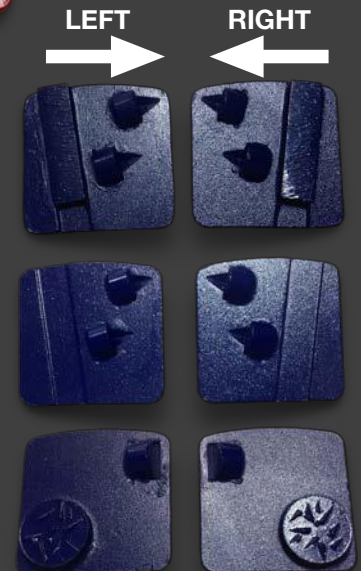
PCD SEGMENTS

Our range of PCD segment slide-on diamonds for aggressive grinding and coatings removal.

PCDSDS, PCD1 and PCD4 are available in LEFT or RIGHT, depending on the rotation of your machine.



| | |
|--|--------------------|
| Single PCD with 6 grit diamond segment | PCDS1D HF MF SF |
| Double PCD with 6 grit diamond segment | PCDS2D HF MF SF |
| 1 x split PCD segment | PCD1SP |
| 2 x split PCD segments | PCD2SP |
| 2 x 1/3 PCD segments + 1 x diamond segment | PCDSDS |
| 2 x 1/3 PCD segments | PCD1 |
| 1/2 PCD segment + 1 x mixed segment | PCD4 |



LOOSE SEGMENTS

Our professional 13mm high loose diamond segments are available in coffin or arrow shapes, various grits and bonds (see chart). Silver solder welding sheets also available.

| | Coffin | Arrow |
|---------------------|----------------------------|--------------|
| 16 Grit | | SEGA16 SF |
| 20/25 Grit | SEGC25 VHF HF MF SF VSF | SEGA25 HF |
| 30/40 Grit | SEGC30 VHF HF MF SF VSF | |
| 60/70 Grit | SEGC60 HF MF SF | |
| 80 Grit | SEGC80 HF MF | |
| 120/140 Grit | SEGC120 HF MF | |



| | | | | |
|-------------------|-------------------|-----------------|--------------------|--------------------|
| Very Hard Floor | Hard Floor | Medium Floor | Soft Floor | Very Soft Floor |
| VHF - Blue | HF - Black | MF - Red | SF - Yellow | VSF - Green |
| Very Soft Bond | Soft Bond | Medium Bond | Hard Bond | Very Hard Bond |

Best for REMOVAL OF COATINGS e.g. glue, paint, resin, etc

SUPER STRIPPER CUP WHEELS

Our "Super Stripper" grinding cup wheels have 25 grit rhomboid shaped 8mm high diamond segments for VERY aggressive concrete grinding and FAST removal of coatings.



| | | |
|-------------|--|-----------------------|
| 5" (125mm) | 6 segments (blue) | SS56 |
| 7" (180mm) | 6 segments (blue) | SS76 |
| | 12 segments soft bond (blue) 12 segment very soft bond (yellow) | SS712 HF SS712 VHF |
| 10" (250mm) | 12 segments (blue) | SS1012 |
| | 12 segments hard bond (yellow) | SS1012 SF |
| | 12 segments very hard bond (green) | SS1012 VSF |

ARROW CUP WHEELS

Arrow segment grinding cup wheels for aggressive concrete grinding and removal of coatings.



| | | |
|-------------|-------------------|----------|
| 4" (115mm) | 5 x 10mm segments | TCW45A |
| 5" (125mm) | 6 x 10mm segments | TCW56A |
| 6" (150mm) | 8 x 10mm segments | TCW68A |
| 7" (180mm) | 6 x 15mm segments | TCW7625A |
| 10" (250mm) | 9 x 15mm segments | TCW109A |

PCD CUP WHEELS

Grinding cup wheels with PCD diamond segments for aggressive concrete grinding and removal of coatings.



| | | |
|-------------|--------------------------|--------|
| 5" (125mm) | 3x1/3 PCD segments + TCT | PCW5 |
| | 12 small PCD segments | PCW5R |
| | 9 split PCD segments | PCW5SP |
| 7" (180mm) | 6x1/3 PCD segments + TCT | PCW7 |
| | 12 small PCD segments | PCW7R |
| | 12 split PCD segments | PCW7SP |
| | 3 PCD segments + 6 grit | SDS73 |
| | 6 PCD segments + 6 grit | SDS76 |
| 10" (250mm) | 9x1/3 PCD segments + TCT | PCW10 |

CUP WHEELS

NOODLE CUP WHEEL

7" (180mm) cup wheel with 8 rhomboid diamond segments + 24 "noodle" diamond segments in very soft bond for QUICK removal of coatings.



RAPTOR CUP WHEELS

Special "raptor" segment cup wheels have 30 grit 5mm high diamond segments for aggressive concrete grinding and coating removal. Especially suited to removal of pressure sensitive glues.



| | | |
|------------|----------------------|------|
| 5" (125mm) | 10 x raptor segments | RAP5 |
| 7" (180mm) | 12 x raptor segments | RAP7 |

STEPPED SEGMENT CUP WHEELS

Stepped segment grinding cup wheels have 25 grit 10mm high diamond segments for VERY aggressive concrete grinding and FAST removal of coatings



| | | |
|------------|----------------------------|---------------|
| 5" (125mm) | 6 segments XHF | TCW56Step |
| 7" (180mm) | 8 segments extra soft bond | TCW78Step XHF |
| | 8 segments very hard bond | TCW78Step VSF |

CURVED SEGMENT CUP WHEELS

Our professional range of 25 grit curved diamond segment cup wheels for aggressive concrete grinding and coating removal.



| | | |
|------------|-----------------------------------|------------|
| 5" (125mm) | 6 x 8mm segments extra soft bond | TCW56P |
| 7" (180mm) | 3 x 12mm segments | TCW73P |
| | 6 x 12mm segments extra soft bond | TCW76P XHF |
| | 6 x 12mm segments soft bond | TCW76P HF |
| | 6 x 12mm segments very hard bond | TCW76P VSF |



TURBO cup wheels

3" (65mm) CUP WHEELS

Trade quality 5mm high diamond segment cup wheels for aggressive to fine concrete grinding. The small size makes for easier grinding in corners and hard to reach places. Only available in soft bond for hard floors. M14 thread for use on 4.5" and 5" angle grinders.



| | Use: | Code: |
|-------------------|-----------------|---------|
| 30/40 Grit | General purpose | TCW330 |
| 60 Grit | Fine | TCW360 |
| 120 Grit | Very fine | TCW3120 |

4" (100mm) CUP WHEELS

Trade quality 5mm high diamond segment cup wheels for aggressive to fine concrete grinding. Available in various grits, medium bond only.



| | Use: | Code: |
|-------------------|----------------------------|------------|
| 30/40 Grit | General purpose DIY | TCW49ECO |
| | General purpose BUDGET | TCWX |
| | 9 segment aggressive | TCW49T |
| | 16 segment general purpose | TCW416T |
| | 18 segment general purpose | TCW418T |
| 80 Grit | 16 segment fine | TCW41680T |
| 120 Grit | 16 segment extra fine | TCW416120T |

4.5" (115mm) CUP WHEELS

Trade quality 5mm high diamond segment cup wheels for aggressive to general purpose concrete grinding. Available in 30/40 grit, medium bond only.

| | Use: | Code: |
|-------------------|----------------------------|---------|
| 30/40 Grit | 9 segment aggressive | TCW459 |
| | 18 segment general purpose | TCW4518 |

Hard Floor

Medium Floor

HF - Black

MF - Red

Soft Bond

Medium Bond

5" (125mm) CUP WHEELS

For very aggressive to fine concrete grinding. Available in trade (5mm high segments) and professional (8mm high segments) qualities, various grits and bonds (see chart).



Our ultra professional range (5.5mm high segments) feature ultra high quality diamonds and are available in various grits, very soft bond only.



6" (150mm) CUP WHEELS

Trade quality 5mm high diamond segment cup wheels for aggressive to fine grinding. To suit HILTI. Available in various grits, medium bond only.

| TRADE | Use: | Code: |
|------------|--|------------|
| 16 Grit | 9 segment aggressive MF | TCW5916T |
| 30/40 Grit | 5 segment (for multiplate use only) HF | TCW5MP |
| | 9 segment aggressive HF MF VSF | TCW5930T |
| | 16 segment general purpose HF MF | TCW51630T |
| | 18 segment general purpose HF MF | TCW51830T |
| 60 Grit | 18 segment fine HF MF | TCW51860T |
| 80 Grit | 18 segment fine HF MF | TCW51880T |
| 120 Grit | 18 segment fine XHF HF MF | TCW518120T |

| PRO | Use: | Code: |
|------------|---------------------------------------|-----------|
| 30/40 Grit | 7 segment "Hilti style" aggressive HF | TCWHIL5 |
| | 9 segment aggressive MF | TCW59P |
| | 18 segment general purpose MF | TCW51830P |

| ULTRA PRO | Use: | Code: |
|------------|--------------------------------|------------|
| 30/40 Grit | 9 segment aggressive VHF | TCW5930X |
| | 18 segment general purpose VHF | TCW51830X |
| 60 Grit | 18 segment fine VHF | TCW51860X |
| 120 Grit | 18 segment fine VHF | TCW518120X |

| | Use: | Code: |
|------------|----------------------------|-----------|
| 30/40 Grit | 9 segment aggressive | TCW69T |
| | 18 segment general purpose | TCW618T |
| 80 Grit | 18 segment fine | TCW61880T |

CUP WHEELS

7" (180mm) CUP WHEELS

For very aggressive to fine concrete grinding. Available in trade (5mm high segments) and professional (8mm high segments) qualities, various grits and bonds (see chart).



Our ultra professional range (5.5mm high segments) feature ultra high quality diamonds and are available in various grits, very soft bond only.



Extra Hard Floor

Very Hard Floor

Hard Floor

Medium Floor

Very Soft Floor

XHF - Pink

VHF - Blue

HF - Black

MF - Red

VSF - Green

Extra Soft Bond

Very Soft Bond

Soft Bond

Medium Bond

Very Hard Bond

| TRADE | Use: | Code: |
|-------------------|---|------------------------------|
| 16 Grit | 12 segment extra aggressive MF | TCW71216T |
| 25 Grit | 12 segment very aggressive 24 segment aggressive | TCW71225T HF TCW72425T HF |
| 30/40 Grit | 12 segment aggressive HF MF VSF 24 segment general purpose HF MF | TCW71230T TCW72430T |
| 60 Grit | 12 segment fine MF 24 segment fine HF MF | TCW71260T TCW72460T |
| 80 Grit | 12 segment fine MF 24 segment fine HF MF | TCW71280T TCW72480T |
| 120 Grit | 12 segment very fine MF 24 segment very fine XHF HF MF | TCW712120T TCW724120T |

| PRO | Use: | Code: |
|-------------------|--|---------------------------------|
| 30/40 Grit | 8 segment "Hilti style" aggressive HF 12 segment aggressive MF 24 segment general purpose MF | TCWHIL7 TCW712P TCW72430P |

| ULTRA PRO | Use: | Code: |
|-------------------|---|------------------------|
| 30/40 Grit | 12 segment aggressive VHF 24 segment general purpose VHF | TCW71230X TCW72430X |
| 60 Grit | 24 segment fine VHF | TCW72460X |
| 120 Grit | 24 segment fine VHF | TCW724120X |

Hard Floor

Medium Floor

HF - Black

MF - Red

Soft Bond

Medium Bond

FAN CUP WHEELS

Fan segment cup wheels for general purpose to fine concrete grinding. Various grits available, medium bond only.



DOUBLE ROW CUP WHEELS

Double row segment cup wheels for general purpose to fine concrete grinding. Various grits and bonds available.



CYCLONE CUP WHEELS

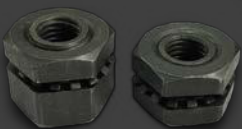
Cyclone turbo cup wheels for general purpose to fine concrete grinding. Various grits available, medium bond only.



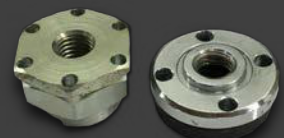
| | | |
|------------|--|----------|
| 5" (125mm) | 7 segments 30/40 grit | TCW5F |
| | 7 segments 60 grit | TCW5F60 |
| | 7 segments 120 grit | TCW5F120 |
| 6" (150mm) | 7 large segments 30/40 grit Suits HILTI | TCW6F |
| 7" (180mm) | 12 segments 30/40 grit | TCW7F |
| | 12 segments 60 grit | TCW7F60 |
| | 12 segments 120 grit | TCW7120F |

| | | |
|------------|------------------|----------|
| 4" (100mm) | 30/40 grit MF | DRCW4 |
| | 80 grit MF | DRCW480 |
| 5" (125mm) | 30/40 grit MF | DRCW5 |
| | 80 grit MF | DRCW580 |
| | 120 grit MF | DRCW5120 |
| 7" (180mm) | 30/40 grit HF MF | DRCW7 |
| | 80 grit MF | DRCW780 |
| | 120 grit MF | DRCW7120 |

| | | |
|------------|------------|---------|
| 4" (100mm) | 30/40 grit | CTC4 |
| 5" (125mm) | 30/40 grit | CTC5 |
| | 120 grit | CTC5120 |



We have cup wheel ADAPTORS to suit all your needs!
 M14 short - M14 tall - M14 tall full thread - M14 Dewalt - M14 flange - 5/8"
 Ask our friendly staff what you need to make our cup wheels work for you!



4-pin impact socket cup wheel remover also now available!



CUP WHEELS

TO SUIT SATELLITE

7" (180mm) diamond segment floor grinding cup wheels to suit Satellite machines. Available in various grits and bonds.



| | Use: | Code: |
|-------------------|---|----------|
| 16 Grit | 3 segment extra aggressive HF MF | TPG7316 |
| | 6 segment aggressive HF MF | TPG7616 |
| 25 Grit | 3 segment extra aggressive VHF HF MF | TPG7325 |
| | 6 segment aggressive HF MF | TPG7625 |
| 30/40 Grit | 3 segment extra aggressive HF MF | TPG7330 |
| | 6 segment aggressive HF MF SF | TPG7630 |
| | 9 segment general purpose HF MF | TPG7930 |
| 80 Grit | 9 segment general purpose & fine VHF MF | TPG7980 |
| 120 Grit | 9 segment fine VHF MF | TPG79120 |

TO SUIT METEOR

10" (250mm) diamond segment floor grinding cup wheels to suit Meteor machines. Available in various grits and bonds.



| | Use: | Code: |
|-------------------|-------------------------------------|-----------|
| 16 Grit | 3 segment extra aggressive HF MF | TPG10316 |
| | 6 segment aggressive HF MF | TPG10616 |
| 25 Grit | 3 segment extra aggressive HF MF | TPG10325 |
| | 6 segment aggressive HF MF | TPG10625 |
| 30/40 Grit | 3 segment extra aggressive HF MF | TPG10330 |
| | 6 segment aggressive HF MF | TPG10630 |
| | 9 segment general purpose HF MF | TPG10930 |
| 80 Grit | 9 segment general purpose & fine MF | TPG10980 |
| 120 Grit | 9 segment fine MF | TPG109120 |

GRINDING PLATES

TO SUIT RICHMOND

8" diamond segment grinding plates to suit Richmond grinders.



| | |
|---|--------|
| 12 x 30/40 grit segment for general purpose grinding | RGH12 |
| 12 x 30/40 grit segment for HARD concrete | RGH12H |
| 24 x 25 grit segment for glue, paint & resin removal | RGH24 |
| 6 x 25 grit arrow segment for glue, paint & epoxy removal | RGHA |

TO SUIT CRETE MOWER/CUB

10" diamond segment grinding plates to suit Crete Mower and CUB machines.

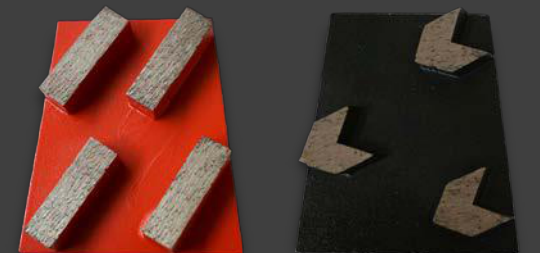


| | |
|--|-------|
| 6 x 30/40 grit segment for glue, paint & epoxy removal | HGH6 |
| 10 x 30/40 grit segment for MEDIUM concrete | HGH10 |
| 20 x 30/40 grit segment for general purpose grinding | HGHGP |
| 20 x 30/40 grit segment for HARD concrete | HGHHC |

WEDGE BLOCKS

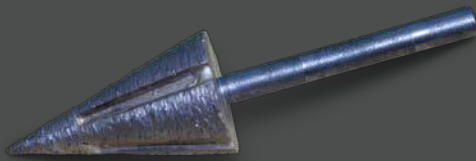
DIAMOND WEDGE BLOCKS

For use with Flextool and MasterFinish wedge block grinding machines.



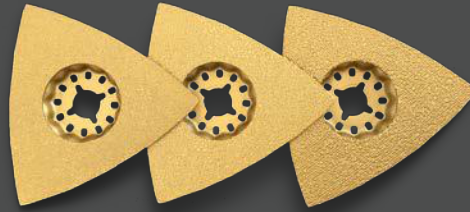
| | |
|---|--------|
| 4 x 30/40 grit segment for general purpose grinding | WBGH |
| 4 x 80 grit segment for fine grinding | WBGH80 |
| 4 x 30/40 grit segment for hard concrete | WBH |
| 3 x arrow segment for glue, paint & epoxy removal | WBA |

Do you find it hard to grind or polish CORNERS, STAIRS, EDGES, CURVES?? Difficult to BEVEL sharp edges?? Smart Diamond Tools has your solution!



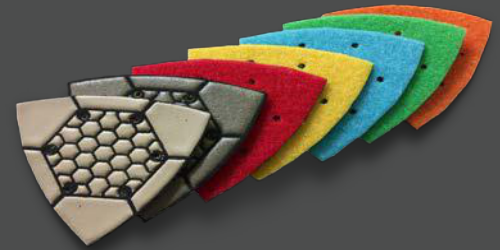
DIAMOND CORNER GRINDER

For use with die grinders (8mm round shank), Smart's diamond corner grinder makes corners a breeze! Available in 30, 60 and 120 grits.



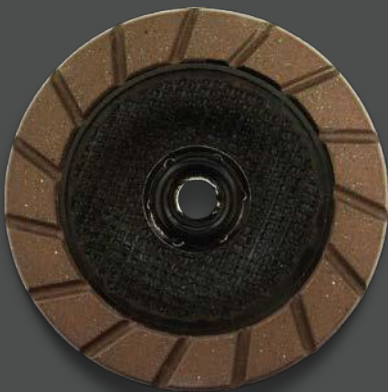
METAL BOND TRIANGLE PADS

Triangle shaped diamond grinding pads. Suitable for use on the Metabo Cordless Multi-Tool. Ideal for corners and hard to reach places. Available in 30, 60 and 120 grits.



TRIANGLE POLISHING PADS

Flexible triangle shaped polishing pads with velcro backing. Suitable for use on the Metabo Cordless Multi-Tool. Ideal for corners and hard to reach places. Available in 50, 100, 200, 400, 800, 1500 and 3000 grits.



EDGEMAXX CERAMIC CUP WHEELS

5" ceramic edging cup wheels for blending edge work or reducing scratches from metal bond grinding. Suitable for dry grinding. M14 thread for use on angle grinders. Available in 30, 50, 100 and 200 grits.



DIAMOND ROUTER BITS

Diamond router bits for shaping edges. M14 thread for use on 5" variable speed grinders. Available in 10mm radius or 45 degree angle, both in 30/40 and 120 grits.

metabo



METABO DIE GRINDER GE950GPLUS

Light and versatile hand-held variable speed die grinder with spindle lock. Features Metabo's S-automatic safety shutdown, restart protection and removable protective rubber cap. Ideal for use with Smart's diamond corner grinder.

| | |
|-----------------------|--------------|
| Motor: | 950W |
| No-load speed: | 2500-8700rpm |
| Collar dia: | 43mm |
| Weight: | 1.7kg |

METABO CORDLESS MULTI- TOOL MT18LTX

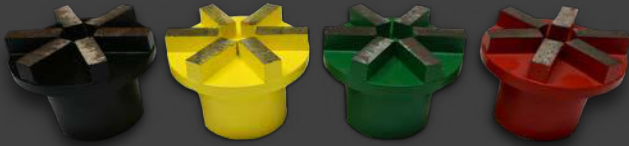
Metabo's oscillating cordless multi-tool is suitable for cutting, grinding and polishing. Features VTC electronics to maintain constant speed even under load, quick tool change system and double LED lights. Ideal for use with Smart's corner grinding and polishing pads.

| | |
|-------------------------|---------------|
| Battery: | 18V Li-ion |
| No-load speed: | 7000-18000rpm |
| Oscillation L/R: | 1.6 degrees |
| Weight: | 1.8kg |

| | | | | | | |
|-------------------|-------------------|-------------------|-----------------|--------------------|--------------------|--------------------|
| Extra Hard Floor | Very Hard Floor | Hard Floor | Medium Floor | Soft Floor | Very Soft Floor | Extra Soft Floor |
| XHF - Pink | VHF - Blue | HF - Black | MF - Red | SF - Yellow | VSF - Green | XSF - White |
| Extra Soft Bond | Very Soft Bond | Soft Bond | Medium Bond | Hard Bond | Very Hard Bond | Extra Hard Bond |

DIAMOND SEGMENT PLUGS

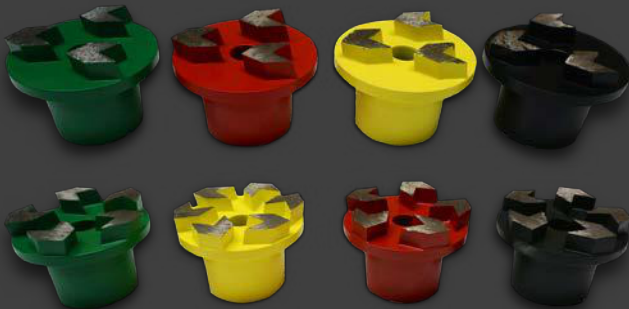
50mm plugs with 74mm plate for use on Floorex and Terrco grinding machines. 6 x 10mm high diamond segments. Various grits and bonds available.



| | Use: | Code: |
|-------------------|----------------------------------|----------|
| 16 Grit | Extra aggressive HF MF SF VSF | PD74-16 |
| 25 Grit | Aggressive XHF HF MF SF VSF | PD74-25 |
| 30/40 Grit | General purpose HF MF SF VSF | PD74-30 |
| 50 Grit | General purpose HF MF | PD74-50 |
| 60 Grit | General purpose HF | PD74-60 |
| 80 Grit | Fine HF MF | PD74-80 |
| 120 Grit | Extra fine HF MF | PD74-120 |

ARROW SEGMENT PLUGS

50mm plugs with 74mm plate for use on Floorex and Terrco grinding machines. Available in 3 x or 5 x 10mm high arrow diamond segments, various grits and bonds.



| | Use: | Code: |
|-------------------|--|---------|
| 16 Grit | 3 segment extra aggressive HF MF SF VSF | PDA-16 |
| | 5 segment aggressive HF MF SF VSF | PDA5-16 |
| 25 Grit | 3 segment aggressive HF MF SF VSF | PDA-25 |
| | 5 segment aggressive HF MF SF VSF | PDA5-25 |
| 30/40 Grit | 3 segment general purpose HF MF SF VSF | PDA-30 |
| | 5 segment general purpose HF MF SF VSF | PDA5-30 |

PCD PLUG

50mm plug with 3 x PCD segments for VERY aggressive coatings removal. For use on Floorex and Terrco grinding machines.



POLISHING MACHINES



AMAZING VALUE!!!



A168P
17" (430mm) polishing machine

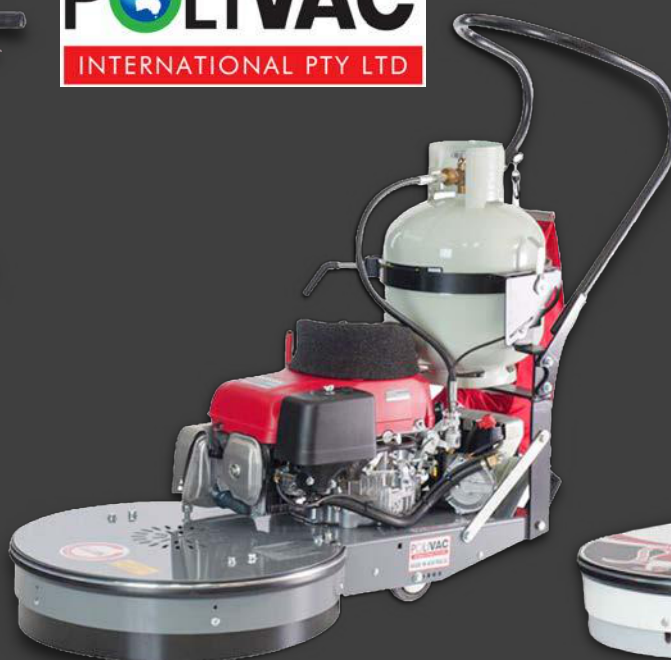
Low speed, weighted polisher with simple manual control and water feed for polishing or cleaning floors. Features removable water tank. Includes weights, a hard and a soft scrubbing brush, velcro drive board, and a spiked drive board for use with fibre pads.

| | |
|-----------------|--------|
| Voltage: | 240V |
| Motor: | 1500W |
| Speed: | 168rpm |
| Weight: | 90kg |

A1500B
20" (510mm) burnishing machine

High speed industrial floor polisher with simple manual control for burnishing floors. Ideal for use with 20" floor buffing / burnishing pads and twister pads.

| | |
|-----------------|----------|
| Voltage: | 220-240V |
| Motor: | 1800W |
| Speed: | 1500rpm |
| Weight: | 43kg |



Polivac SV25
400mm rotary suction sander

The most efficient and reliable floor sander in it's price range, the Sandivac can also be used for scrubbing and stripping applications. Powered by a heavy duty 4 pole electric motor. Features inbuilt vacuum with large capacity collection bag, dust skirt, 15m lead and fully adjustable handle.

Polivac GAZ20
20" high speed gas burnisher

A compact, high speed machine delivering long life and reliability. Fitted with the new Closed Loop Engine Emission technology, it automatically ensures that CO emissions are minimised and maintained at safe levels. Features belt-driven drive, inbuilt vacuum and electric start. 9kg gas bottle not included.

Polivac SL2000 Stingray
500mm ultra high speed polisher

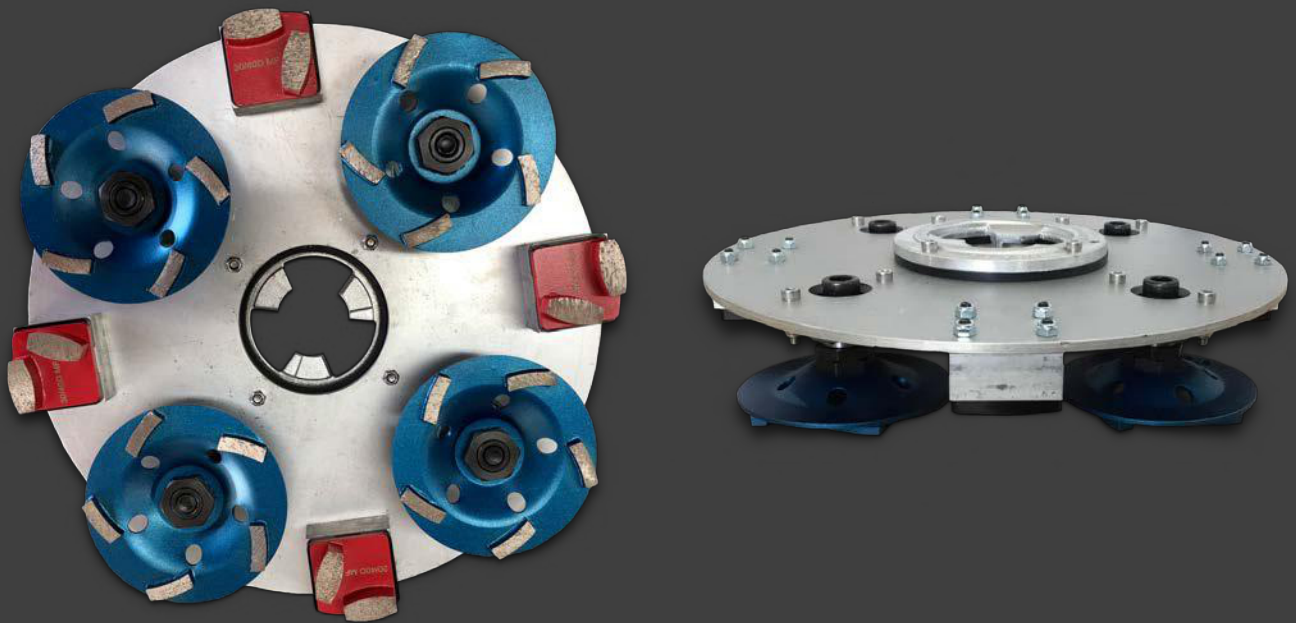
When you want fast-set, full gloss floors, you can rely on the legendary long life and reliability of this ultra high speed straight-line suction floor burnisher. The Stingray is ideal for large operations and features a belt-driven drive, inbuilt vacuum, 15m lead and fully adjustable handle.

| | |
|----------------|----------------|
| Motor: | 1.1kw (1.48hp) |
| Vacuum: | 300W |
| Speed: | 187rpm |
| Weight: | 53kg |

| | |
|-----------------|---------------|
| Motor: | 9.69kw (13hp) |
| Speed: | 2500rpm |
| Battery: | 12V 20Ah |
| Noise: | 89DB |
| Weight: | 95kg |

| | |
|----------------------|---------------|
| Motor: | 1.6kw (2.1hp) |
| Speed: | 1500rpm |
| Pad Pressure: | 10kg |
| Weight: | 46kg |

MULTIPLATE



CONVERTS ALL OLD & NEW POLIVAC FLOOR POLISHERS TO A MULTI-PURPOSE CONCRETE PREPARATION MACHINE

- ✓ *Removes plaster, paint, tile adhesive, etc*
- ✓ *Prepares concrete floors for floor coatings and adhesives*
- ✓ *Grinds concrete*
- ✓ *Polishes concrete*
- ✓ *Burnishes concrete*
- ✓ *Sands a variety of floor surfaces*

Pack includes multiplate, 4 x TCW5MP cup wheels, 4 x BP5 polishing pad holders & 4 holding blocks for slide-on diamonds (diamonds pictured not included)

VELCRO BACKING PADS

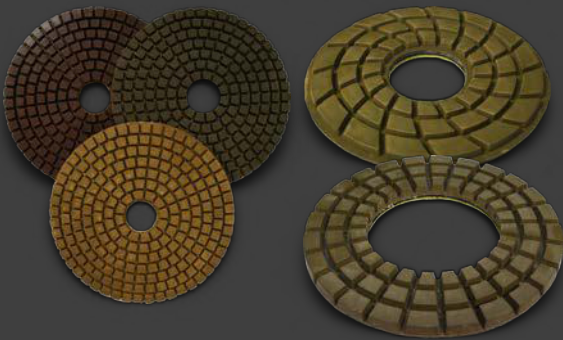
For use with our polishing pads. M14 thread. Available in various sizes in plastic/foam or aluminium.



| | | |
|------------|---------------------------|-------------|
| 3" (80mm) | Aluminium | BP3A |
| 4" (100mm) | Plastic/foam Aluminium | BP4 BP4A |
| 5" (125mm) | Plastic/foam Aluminium | BP5 BP5A |
| 7" (180mm) | Plastic/foam Aluminium | BP7 BP7A |

POLISHING PADS

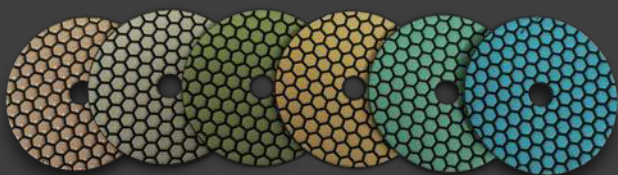
Diamond impregnated flexible resin pads with velcro backing, suitable for wet or dry polishing of concrete. Thicker pads give longer life. Available in various sizes in the following grits: 50, 100, 200, 400, 800, 1500 and 3000.



| | | |
|------------|----------------------|--------------|
| 3" (80mm) | 3mm high | FC33 |
| 4" (100mm) | 3mm high | FC43 |
| 5" (125mm) | 3mm high 5mm high | FC53 FC55 |
| 7" (180mm) | 3mm high 5mm high | FC73 FC75 |
| 9" (230mm) | 10mm high WET ONLY | FC910W |

HEXAGONAL POLISHING PADS

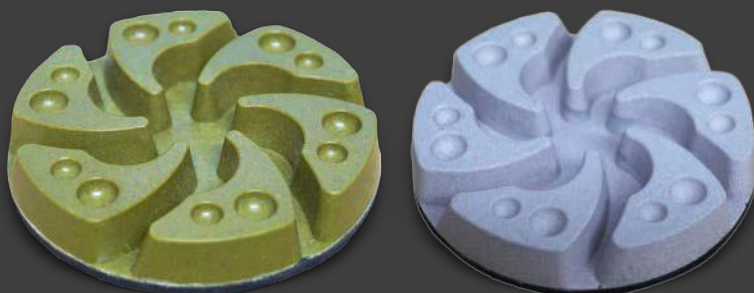
Pure resin, thin flexible pads with velcro backing, suitable for polishing concrete. Gives a high quality finish. Available in two sizes in the following grits: 30, 50, 100, 200, 400, 800, 1500 and 3000.



| | | |
|------------|------------|-------|
| 4" (100mm) | 2mm high | HFC4 |
| 5" (125mm) | 2.1mm high | HFC5P |

RESIN POLISHING PUCKS

3" (80mm) x 12mm solid resin diamond polishing pads with velcro backing. Use on heavy floor grinders with our velcro slide-on base plates. Available in wet or dry in the following grits: 30, 50, 100, 200, 400, 800, 1500 and 3000.



CHEMICAL BOND POLISHING PUCKS

3" (80mm) x 10mm chemical bond diamond polishing pads with velcro backing. Use on heavy floor grinders with our velcro slide-on base plates. Ideal for removing scratches after metal bond grinding. Available in the following grits: 50, 10, 200, 400, 800, 1500 and 3000.



CERAMIC GRINDING PUCKS

3" (80mm) ceramic grinding discs with velcro backing. Use on heavy floor grinders with our velcro slide-on base plates. Ideal for transitioning between metal bond and resin bond diamonds. Dry grind only. Available in the following grits: 30, 50, 100, 200, 400 and 800.



FLOOR BUFFING / BURNISHING PADS

Floor buffing/burnishing pads specifically designed for concrete. For use on high speed floor polishers and burnishing machines. Available in two sizes and various coarseness levels.



| | | |
|--------------------|---------------------|-----------|
| 17" (430mm) | Hard stripping | FPBLACK |
| | Spray buff & polish | FPRED |
| | Soft polish | FPWHITE |
| 20" (510mm) | Hard stripping | FP20BLACK |
| | Spray buff & polish | FP20RED |
| | Soft polish | FP20WHITE |

TWISTER PADS

Clean and polish floors without using chemicals. Recommended for use on machines up to 3000rpm. Available in 17" and 20" sizes and the following grits: 400, 800, 1500 and 3000.





SMART DIAMOND
— TOOLS PTY LTD —

SMART DIAMOND TOOLS PTY LTD

Factory 5, 76 Rushdale Street, Knoxfield VIC 3180

Phone: 1800 637 347

Email: sales@smarttools.com.au

Web: www.smarttools.com.au

**Contact us for a
price list
today!**

**FLOOR GRINDING /
POLISHING
PRODUCT
CATALOGUE 2020**