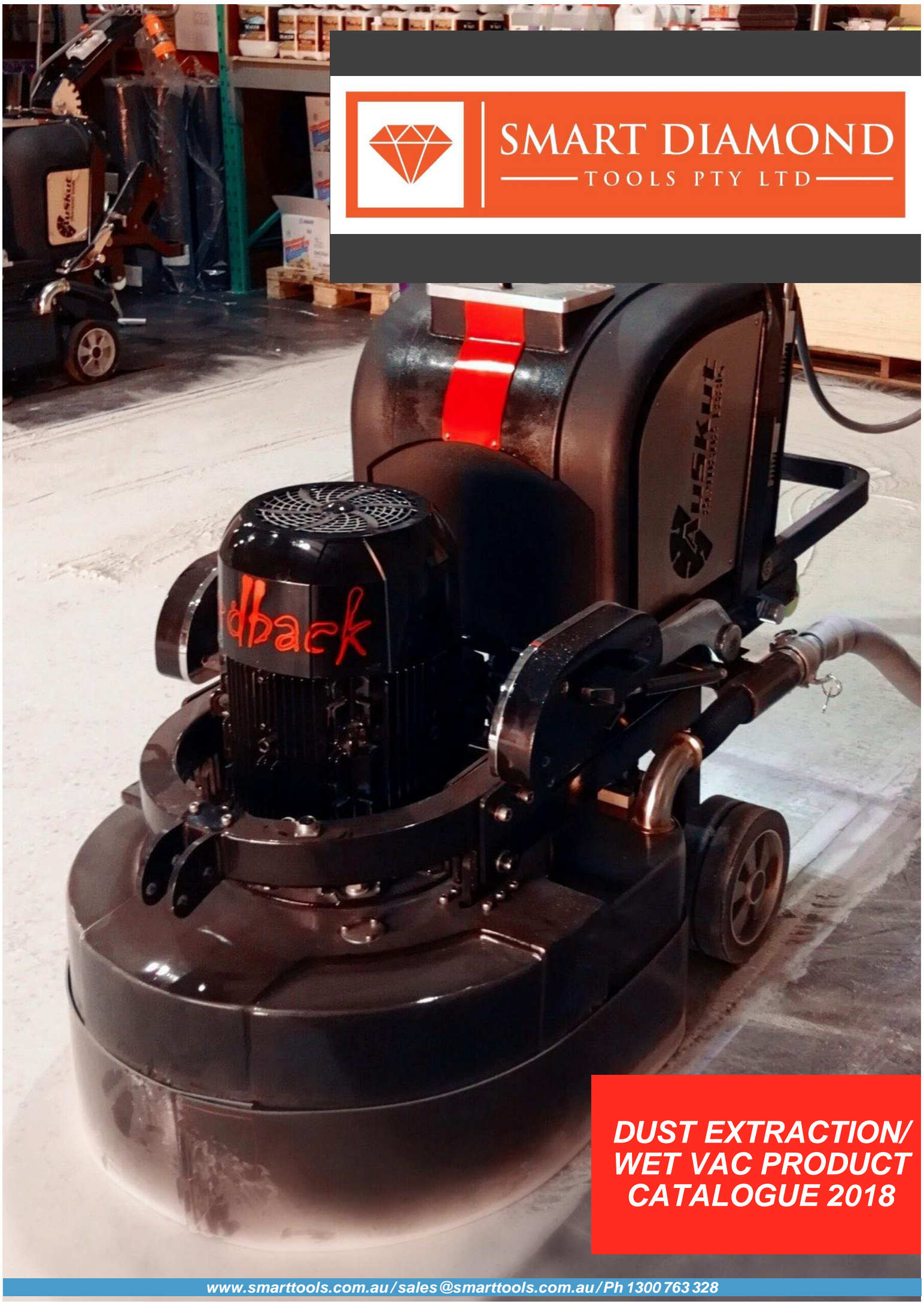




**SMART DIAMOND**  
— TOOLS PTY LTD —



**DUST EXTRACTION/  
WET VAC PRODUCT  
CATALOGUE 2018**

## **4 / DUST EXTRACTORS**

*Check out our extensive range of quality dust extractors, perfect for combining with our grinding equipment.*

## **10 / SEPARATORS**

*Extend the life of your dust extractor with a separator.*

## **11 / WET VACS**

*You won't believe the prices on these versatile wet vacs!*

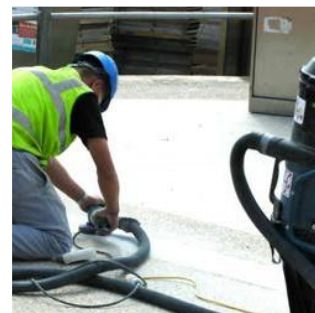
## **12 / DUST SHROUDS**

*Biggest range of 5" and 7/9" dust shrouds for all your grinding and cutting needs.*

## **14 / ACCESSORIES**

*Everything you could possibly need for your vacuum and more!*

*Replacement bags, hose, motors, wands and heads, as well as water collector pads and adaptors.*



*Contact us for a  
price list  
today!*





**DUST  
EXTRACTION/  
WET VACS**

Contact us for a  
price list  
today!

## **ABOUT Smart Diamond Tools**

*Smart Diamond Tools is a leading manufacturer and supplier of high quality diamond tools and machinery. Australian owned and family run, we established in Melbourne in 1989 and have been supplying the concreting and construction industries throughout Australia for 30 years. Visit us in store or call now on 1300 763 328 for Australia wide delivery.*



Free shipping for orders over \$400 (\*excludes machinery, liquids & adaptor plates)

# DUST EXTRACTORS

Smart's extensive range of dust extractors are suitable for dry applications such as concrete grinding and use in construction sites, industrial workshops and warehouses.



**ASVAC4**  
**\$3,690.00**  
50L dust extractor

*Powerful dust collection in a compact size! Features non-clogging auto filter cleaning, PTFE filter which collects dust debris down to 0.3 micron (equivalent micron rating to M-class) and large capacity hopper style bagging system. Individual switches on motors. Includes 10m x 45mm hose, wand and floor tool.*

<b>Motor:</b>	2 x 1200W (3.2HP)
<b>Airflow:</b>	280cfm / 475m3h
<b>Tank:</b>	50L
<b>Hose Outlet:</b>	50mm dia.
<b>Noise:</b>	75db
<b>Weight:</b>	54kg
<b>Dimensions:</b>	700x580x1050mm



**ASVAC450**  
**\$**  
75L dust extractor

*The power of the ASVAC4 at a budget price! Features non-clogging auto filter cleaning, PTFE filter which collects dust debris down to 0.3 micron (equivalent micron rating to M-class) and large capacity dust bin bagging system. Individual switches on motors. Includes 10m x 45mm hose, wand and floor tool.*

<b>Motor:</b>	2 x 1200W (3.2HP)
<b>Airflow:</b>	280cfm / 475m3h
<b>Tank:</b>	75L
<b>Hose Outlet:</b>	50mm dia.
<b>Noise:</b>	75db
<b>Weight:</b>	46kg
<b>Dimensions:</b>	500x500x920mm

## DUST EXTRACTORS



**ASVAC6**  
**\$4,195.00**  
75L dust extractor

The power of the ASVAC9 that will still fit into small vans! Features non-clogging auto filter cleaning, PTFE filter which collects dust debris down to 0.3 micron (equivalent to M-class micron rating) and large capacity hopper style bagging system. Individual switches on motors. Includes 10m x 45mm hose, wand and floor tool.

<b>Motor:</b>	3 x 1200W (4.7HP)
<b>Airflow:</b>	330cfm / 560m3h
<b>Tank:</b>	75L
<b>Hose Outlet:</b>	50mm dia.
<b>Noise:</b>	75db
<b>Weight:</b>	65kg
<b>Dimensions:</b>	750x650x1100mm



Also available in  
ADJUSTABLE  
HEIGHT version

**ASVAC9**  
**\$4,500.00**  
"Longopac" style dust extractor

Features powerful suction and continuous non-clogging auto filter cleaning, PTFE filter which collects dust debris down to 0.3 micron (equivalent to M-class micron rating) and "Longopac" style bagging system. Motors are individually switchable to change suction level as required. Includes 10m x 45mm hose, wand and floor tool.

<b>Motor:</b>	3 x 1200W (4.7HP)
<b>Airflow:</b>	330cfm / 560m3h
<b>Dust collection:</b>	"Longopac" style
<b>Hose Outlet:</b>	50/75mm dia.
<b>Noise:</b>	75db
<b>Weight:</b>	75kg
<b>Dimensions:</b>	780x750x1520mm



## DUST EXTRACTORS



**A26**  
**\$3,850.00**

Single phase dust extractor

Features powerful suction with 2-stage filtration, PTFE anti static filter cartridge which collects dust debris down to 0.3 micron (equivalent to M-class micron rating), "Longopac" style bagging system, programmable filter shaker system and pressure gauge to monitor filter condition. Includes 10m hose, cuffs, aluminium wand and floor tool.

<b>Motor:</b>	2 x 1200W
<b>Airflow:</b>	224cfm / 380m3h
<b>Dust collection :</b>	"Longopac" style
<b>Hose:</b>	50mm dia.
<b>Noise:</b>	82db
<b>Weight:</b>	85kg
<b>Dimensions:</b>	863x575x1204mm



**A26PH**  
**\$2,695.00**

Single phase dust extractor

Features powerful suction with single stage filtration, PTFE anti static filter cartridge which collects dust debris down to 0.3 micron (equivalent to M-class micron rating), "Longopac" style bagging system, continuous filter shaker system and height adjustable frame to allow transportation in smaller vehicles. Includes 10m hose, cuffs, aluminium wand and floor tool.

<b>Motor:</b>	2 x 1200W
<b>Airflow:</b>	182cfm / 309m3h
<b>Dust collection:</b>	"Longopac" style
<b>Hose:</b>	50mm dia.
<b>Noise:</b>	82db
<b>Weight:</b>	60kg
<b>Dimensions:</b>	830x600x1170mm

## DUST EXTRACTORS



**A32**  
**\$4,195.00**

*Single phase 15Amp dust extractor*

Features powerful suction with 2-stage filtration, PTFE anti static filter cartridge which collects dust debris down to 0.3 micron (equivalent to M-class micron rating), "Longopac" style bagging system, programmable filter shaker system, and pressure gauge to monitor filter condition. Includes 10m hose, cuffs, aluminium wand and floor tool.

<b>Motor:</b>	3 x 1200W
<b>Airflow:</b>	330cfm / 560m3h
<b>Dust collection:</b>	"Longopac" style
<b>Hose:</b>	50mm dia
<b>Noise:</b>	82db
<b>Weight:</b>	89kg
<b>Dimensions:</b>	930x575x1350mm



**RBVAC**  
**\$8,990.00**

*Redback 3-phase dust extractor*

Powerful dust extraction for your large grinding machine. Manual purge back flow filter cleaning system. 2-stage filtration (15 x bag filters primary & 2 x PTFE cartridges secondary) with 32Amp auxiliary output for your grinder. "Longopac" style bagging system. Includes 10m anti static hose with cam-lock fitting.

<b>Motor:</b>	7.5kw 10HP
<b>Airflow:</b>	353cfm / 600m3h
<b>Dust collection:</b>	"Longopac" style
<b>Hose:</b>	50mm dia
<b>Voltage/Amps:</b>	415V / 16-20Amp
<b>Weight:</b>	260kg
<b>Dimensions:</b>	1300x732x1700mm

# DUST EXTRACTORS



## **Metabo ASR35LACP - \$868.00**

L-class vacuum

All-purpose vacuum with automatic filter cleaning which lets you work without interruption. Especially suited for extracting concrete and rock dust. A power socket with auto start makes it the perfect partner for power tools. Certified in accordance with EU standards for L class dust. Features 2 x strong/washable M-class pleated filters.

Motor:	1400W
Max Airflow:	3660L/min
Vacuum:	3.6psi
Tank:	35L
Hose:	35mm dia.
Weight:	16kg

## **Metabo ASR35MACP - \$1,063.00**

M-class vacuum

All-purpose vacuum with automatic filter cleaning which lets you work without interruption. Especially suited for extracting concrete and rock dust. A power socket with auto start makes it the perfect partner for power tools. Certified in accordance with EU standards for M class dust. Features 2 x strong/washable M-class pleated filters.

Motor:	1400W
Max Airflow:	3660L/min
Vacuum:	3.6psi
Tank:	35L
Hose:	35mm dia.
Weight:	16kg



## DUST EXTRACTORS



**DeWalt DWV902M-XE - \$839.00**  
M-class vacuum

M-class construction dust extractor for wet and dry operation. Innovative dual filter cleaning system, automatically cleaned every 15 seconds. Constant power even with the finest concrete dust. Optional accessories include a universal quick connector and an AirLock dust connection system construction kit. Replacement filters, paper dust bags and fleece dust bags available (sold separately).

Motor:	1400W
Max Airflow:	4080L/min
Tank:	38L
Weight:	15kg



**Eibenstock DSS25A – N/A**  
Wet/dry vacuum

Compact wet and dry vacuum with automatic filter cleaning and power socket with automatic switch-on for attached machines. Features consistently high flow rate to increase filter life (2 x polyester filters). Replacement fleece dust bags and filters available (sold separately).

Motor:	1400W
Max Airflow:	3660L/min
Max Vacuum:	248mbar
Tank:	25L
Weight:	12.7kg
Dimensions:	457x400x535mm



**Eibenstock DSS35MIP - \$799.00**  
M-class vacuum

M-series cleaner for harmful dust with permanent pulse filter cleaning. Suitable for wet and dry applications. Features constantly high air flow during filter cleaning, power socket with automatic switch-on for attached machines, diffuser and 2 x durable polyester filters. Replacement fleece dust bags and filters available (sold separately).

Motor:	1600W
Max Airflow:	3840L/min
Max Vacuum:	259mbar
Tank:	35L
Weight:	15kg
Dimensions:	550x400x550mm

## SEPARATORS

Designed for use in-between your grinder and dust extractor, separators extend the life span of your dust extractor filters and motor, increasing working efficiency and saving you money!



**SEP - \$389.00**  
Cyclone separator

Acts as a pre-filter for your dust extractor, removing up to 90% of dust before it gets to your vacuum. Clearly marked air-in and air-out arrows marked on the unit. 1m of 50mm hose and fittings included.

**SEPL - \$1,490.00**  
"Longopac" style bagging separator

Acts as a pre-filter for your dust extractor, removing up to 90% of dust before it gets to your vacuum. Strong steel frame construction with continuous bag "Longopac" style dust collection system.

**CPS-6550 - \$569.00**  
Floorex Supa Separator

65L capacity separator suitable for 1 & 2 motor vacuums. Clear labels on air-in and air-out 50mm hose ports. Includes 1.2m of fitted 50mm vacuum hose.

## WET VACS

Check out our extensive range of wet vacuums suitable for water / slurry collection and general site clean ups.  
NOT suitable for concrete / plaster dust collection.



**V30 - \$189.00**  
30L wet/dry vacuum

The smallest of our best selling range! Powerful suction suitable for small scale. Includes standard accessory kit of 2.5m hose, wand and head.

Motor:	1000W
Tank:	30L
Airflow:	3180L/min
Height:	720mm
Dia of Tank:	345mm



**V70 - \$549.00**  
70L wet/dry vacuum

Available in 2 motor (10amp) or 3 motor (15amp) versions. Powerful suction and stable manoeuvrability. Includes standard accessory kit of 2.5m hose, wand, wet head, dry head, crevice tool and brush.

Motor:	2 motor 2000W 3 motor 3000W
Tank:	70L
Airflow:	2 motor 6360L/min 3 motor 7200L/min
Height:	950mm
Dia of Tank:	440mm



**V90 - \$549.00**  
90L wet/dry vacuum

Available in 2 motor (10amp) or 3 motor (15amp) versions. Powerful suction and stable manoeuvrability. Includes standard accessory kit of 2.5m hose, wand, wet head, dry head, crevice tool and brush.

Motor:	2 motor 2000W 3 motor 3000W
Tank:	90L
Airflow:	2 motor 6360L/min 3 motor 7200L/min
Height:	950mm
Dia of Tank:	440mm



## SHROUDS

### 5" Shrouds



#### **5SHROUD - \$95.00**

Suits 125mm grinder with a 50mm clamp. Hard plastic with bristle edge. Clip-off front for edge grinding. 38mm OD vacuum port.



#### **5SHROUDC - \$62.00**

Suits 125 mm grinder with an adjustable clamp to fit 42-55mm. Clear hard plastic with bristle edge. Clip-off front for edge grinding. 35mm OD vacuum port.



#### **5SHROUDG - \$75.00**

Suits 125mm grinder with . Hard plastic with bristle edge. Swing front for edge grinding. 32mm OD vacuum port.



#### **5SHROUDM - \$59.00**

Suits 125mm grinder with multiple clamps ( 39 mm, 42 mm, 46 mm, 49mm). Steel with velcro/vinyl skirt. Not suitable for edge grinding. 33mm OD vacuum port.



#### **5SHROUDHOL - N/A**

Holer brand - suits 125mm grinder with. Hard plastic with hard nylon wear strip. Flip-up front for edge grinding. 35mm ID / 51mm OD vacuum port.



#### **DWE46150 - \$125.00**

DeWalt brand - suits 115mm and 125mm grinders with keyless clamp. Hard plastic with bristle edge. Swing front for edge grinding. AirLock vacuum port.



#### **AD5 - \$69.00**

Suits 125mm grinder with adjustable clamp sizes 40-44mm, 43-47mm and 48-51mm available. Hard plastic and metal cutting shroud. Adjustable cutting depth with locking wing nut (5-67mm). 38mm OD vacuum port.

# SHROUDS

## 7/9" Shrouds



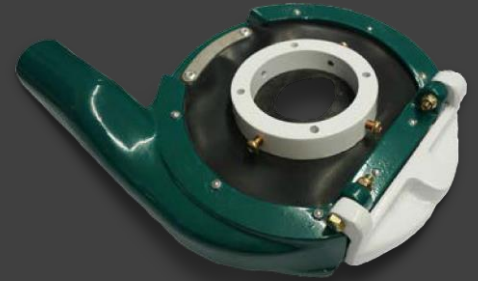
### **7SHROUD - \$99.00**

Suits 180mm grinder and available in 2 clamp sizes (65mm, 75mm). Hard plastic with bristle edge. Clip-off front for edge grinding. 38mm OD vacuum port.



### **7SHROUDG - \$75.00**

Suits 180mm grinder. Hard plastic with bristle edge. Swing front for edge grinding. 35mm ID vacuum port.



### **7SHROUDH - \$219.00**

Suits 180 mm grinder with an adjustable clamp to suit 65-75mm. Alloy. Lift-up door for edge grinding. 40mm OD vacuum port.



### **7SHROUDM - \$59.00**

Suits 180mm grinder with multiple clamps (65mm, 75mm). Steel with velcro/vinyl skirt. Not suitable for edge grinding. 38mm OD vacuum port.



### **7SHROUDR - \$109.00**

Suits 180mm grinder with rubber spacers to suit popular brands i.e. Dewalt, Makita, Milwaukee, Metabo & Bosch. Hard rubber with steel wear strip. Flip-up door for edge grinding. 58mm ID vacuum port.



### **7SHROUDHOL - N/A**

Holer brand - suits 180mm grinder. Hard plastic with hard nylon wear strip. Flip-up front for edge grinding. 35mm ID / 51mm OD vacuum port.



### **7SHROUDHOLM - \$385.00**

Holer brand - suits 180mm grinder. Alloy construction. Flip-up front for edge grinding. 35mm ID / 51mm OD vacuum port.



### **DWE46170 - \$219.00**

DeWalt brand - suits 180mm grinders with keyless clamp. Rubber with steel wear strip. Flip-up front for edge grinding. AirLock vacuum port.



### **AD9 - \$89.00**

Suits 230mm grinder with adjustable clamp to suit sizes 83-90mm. Hard plastic and metal cutting shroud. Adjustable cutting depth with locking wing nut (5-67mm). 38mm OD vacuum port.

## ACCESSORIES



### **BAG65 - \$1.85** **BAG90 - \$2.30**

Plastic bags to suit various dust extractors and separators. Available in two sizes: 650 x 750 mm and 900 x 700 mm.



### **ASVACLONGO - \$199.00**

To suit various dust extractors and separators that take "Longopac" style refill bags.



### **VACWCP - \$109.00**

Vacuum water collector pads adhere to the wall or floor by vacuum suction (attach wet vac) and effectively collect the dust/water at the source while core drilling. A full set suits sizes 45mm, 55mm, 65mm, 76mm, 110mm and 130mm.



### **VHose38/45/50 - \$9.00/\$11.00/\$12.00**

Replacement vacuum hose, sold by the metre. Available in 38mm, 45mm and 50mm diameters.



### **VMOTOR - \$69.00**

Replacement 1000W motor suitable for our 30L, 70L and 90L wet vacs.

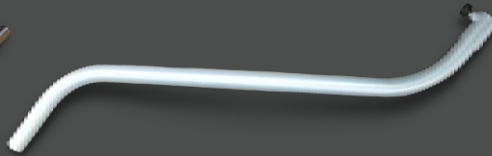


## ACCESSORIES



### **VWAND - \$26.00**

38mm chrome vacuum wand (2 piece) for use with Smart's 30L, 70L and 90L wet vacs.



### **AVACWAND - \$120.00**

50mm aluminium wand for use with Smart's A26 and A32 dust extractors.



### **ASVACWAND - \$34.50**

Plastic wand and elbow (sold separately) for use with Smart's ASVAC range of dust extractors.



### **VDNOZZLE - \$17.00**

Vacuum head for dry applications. 400mm wide for a 38mm attachment.



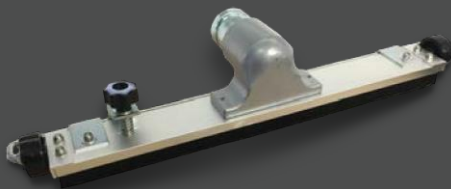
### **VWNOZZLE - \$17.00**

Vacuum head for wet applications. 400mm wide for a 38mm attachment.



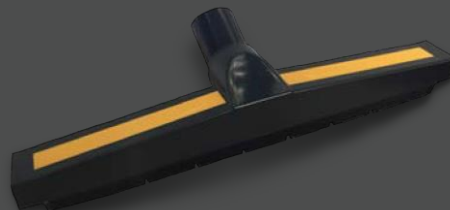
### **V90SQ - \$135.00**

Squeegee floor attachment for the front of Smart's V90 wet vac. Designed to easily remove liquid or slurry. 640mm wide for a 38mm attachment.



### **AVACHEAD - \$105.00**

Vacuum head for use with Smart's A26 and A32 dust extractors.



### **ASVACDRYHEAD - \$72.00**

Vacuum head for Smart's ASVAC range of dust extractors.



### **VWRUBBER/SQ - \$5.50/\$3.50**

Replacement rubber strips for VWNOZZLE and V90SQ. Sold in sets of 2.

## ACCESSORIES



### **VCUFF38 - \$3.50**

38mm vacuum hose cuff, for use with our VWAND 38mm vac wand.



### **VCUFF51 - \$13.90**

51mm vacuum hose cuff, for use with our AVAC WAND 50mm vac wand



### **VCUFF5138 - \$28.50**

Reducer cuff with 51mm threaded x 38mm slip cuff.



### **VICUFF - \$20.50**

Adaptor 51 mm x 38 mm barb coupling PVC, join 50mm hose to 38mm hose.



### **ASVACUFF - \$10.50**

45mm vacuum hose cuff, compatible with the ASVAC range.



### **VEND38 - \$3.50**

38mm hose end, compatible with our V30, V70 & V90 wet vacs.



### **VJOINER38 - \$18.90**

Hose joiner 38mm



### **VJOINER51 - \$19.50**

Hose joiner 51mm



### **ADEHA - \$7.90**

Stepped adaptor