



SMART DIAMOND  
— TOOLS PTY LTD —



**DRILLING  
PRODUCT  
CATALOGUE 2019**

## **4 / CORE DRILLS & RIGS**

*Core drill machines and rigs for all sizes at amazing prices.*

## **8 / CORE BARRELS**

*Trade quality, 250mm short barrels, 1m long barrels and premium quality ARIX.*

## **11 / CORE DRILL ADAPTORS**

*See our large range of adaptors including 1 1/4" UNC and Hilti style.*

## **12 / CORE DRILL ACCESSORIES**

*Core barrel remover, extensions, loose diamond segments, vacuum pumps and pads, water/dust extraction, anchors.*

## **15 / HAMMER DRILLS**

*Our best selling quality hammer drill machines.*

## **16 / DRILL BITS**

*Small tile bits, blind bits, SDS masonry bits, rebar cutters and X-bits.*



**Contact us for a  
price list  
today!**





**DRILLING  
PRODUCTS**

Contact us for a  
price list  
today!

## **ABOUT Smart Diamond Tools**

*Smart Diamond Tools is a leading manufacturer and supplier of high quality diamond tools and machinery. Australian owned and family run, we established in Melbourne in 1989 and have been supplying the concreting and construction industries throughout Australia for 30 years. Visit us in store or call now on for Australia wide delivery.*



Free shipping for orders over \$400 (\*excludes machinery, liquids & adaptor plates)

## CORE DRILLS & RIGS

AMAZING  
VALUE!!!



### **CD680J - \$420.00**

3-speed core drill

Trade quality core drill suitable for hand and rig drilling up to 80mm. 3 speed gearbox with safety slip clutch. The ideal core drill machine for pool fencing and pest control contractors.

Motor:	1500W
Speed:	920/1725/3450rpm
Weight:	7.5kg
Dimensions:	510x300x400mm



### **RIGJ - \$295.00**

Rig / Core drill stand

Rig to suit CD680J 3 speed core drill machine. Robust yet lightweight at only 14kgs, featuring a 60mm clamping system which can be used with most popular hand held core drill machines. Slot on the base allows for the use of anchor bolts or suction bases.

## CORE DRILLS & RIGS



### **ADM160 - \$995.00**

3-speed wet/dry core drill

Heavy-duty core drill suitable for wet or dry drilling up to 80mm handheld or 160mm rig mounted. Features 3-speed gearbox, quick release hose connection for wet drilling, slip clutch and electronic overload protection. Inline RCD for safety.

Motor:	2000W
Speed:	850/1640/3450rpm
Weight:	6kg
Dimensions:	552x110x150mm

### **ADM8P - \$1,449.00**

3-speed wet core drill

Heavy-duty core drill suitable for wet drilling up to 202mm. Features 3-speed gearbox with mechanical clutch, magnesium motor housing and gear case, LED load indicator light, electronic overload and thermal protection.

Motor:	2500W
Speed:	480/1050/2200rpm
Weight:	7.3kg
Dimensions:	463x127x310mm

### **BY250RIG - \$715.00**

Rig / Core drill stand

This rig will suit ADM160 or ADM8P machines and other 60mm collar hand held drills. Featuring a lightweight strong design, quick release crank handle, 590mm carriage travel, built in vacuum base which can function with the addition of a vacuum pump (sold separately). Slotted base allows for use with an anchor bolt system. The large rear wheels make for easy manoeuvrability around the worksite.



### **ADM14 - \$2,490.00**

*4-speed wet core drill*

*Suitable for wet drilling up to 450mm. Features 4-speed gearbox with mechanical clutch, electronic overload protection, extra high efficiency motor, aluminium housing and quick release water coupling.*



### **ADM14R - \$2,490.00**

*Rig / Core drill stand*

*Rig / Core drill stand to suit ADM14 core drill. Features an alloy mast with tilt capacity and steel base. Strong, sturdy construction with rear wheels for easy manoeuvrability around the worksite. Core drill machine and barrel not included.*

<b>Motor:</b>	3500W
<b>Speed:</b>	385/530/975/1340rpm
<b>Weight:</b>	13.5kg
<b>Dimensions:</b>	550x155x210mm



## CORE DRILLS & RIGS



### **Eibenstock PLD182 - \$1,599.00**

3-speed wet core drill

Compact hand held 3-speed core drill for wet drilling up to 182mm. Features electronic soft start, temperature control, overload protection and mechanical safety clutch. 1 1/4" UNC male core drill bit connection. Oil bath gearbox with unique oil pump for lubrication when drilling at all angles. Bubble levels built into machine for precise drilling.

<b>Motor:</b>	2300W
<b>Speed:</b>	950/2200/4400rpm
<b>Weight:</b>	7.5kg
<b>Dimensions:</b>	430x110x300



### **Eibenstock DBE352 - \$4,755.00**

Core drilling unit

Powerful unit for wet drilling from 42mm to 352mm. Features 3-speed core drill with electronic soft start, temperature control, overload protection and mechanical safety clutch. Included rig features integrated spirit level, tilts to 45 degrees and compact combination base with removable wheel axle. Barrel not included.

<b>Motor:</b>	3000W
<b>Speed:</b>	230/500/1030rpm
<b>Weight:</b>	35kg
<b>Dimensions:</b>	750x350x1100

**BEST  
SELLER!**

## TRADE CORE BARRELS

Smarts range of quality laser welded & brazed core drill barrels, our most popular and best value for money! 350-400mm barrel length on sizes up to 38mm. Standard barrel length is 450mm. Standard 1 1/4" UNC thread.



## CORE BARRELS

*Best value  
diamond core  
barrels in  
Australia!!*

Diameter:	Code:
12mm - \$59.00	BT12
14mm - \$62.00	BT14
16mm - \$63.00	BT16
18mm - \$64.00	BT18
20mm - \$65.00	BT20
22mm - \$66.00	BT22
25mm - \$67.00	BT25
28mm - \$68.00	BT28
30mm - \$69.00	BT30
32mm - \$70.00	BT32
35mm - \$71.00	BT35
38mm - \$73.00	BT38
40mm - \$74.00	BT40
42mm - \$75.00	BT42
46mm - \$79.00	BT46
52mm - \$89.00	BT52
56mm - \$94.00	BT56
62mm - \$99.00	BT62
66mm - \$103.00	BT66
67mm - \$107.00	BT67
72mm - \$109.00	BT72
76mm - \$116.00	BT76
77mm - \$116.00	BT77
82mm - \$125.00	BT82
92mm - \$140.00	BT92
95mm - \$145.00	BT95

Diameter:	Code:
102mm - \$155.00	BT102
108mm - \$165.00	BT108
110mm - \$165.00	BT110
117mm - \$175.00	BT117
122mm - \$185.00	BT122
127mm - \$195.00	BT127
132mm - \$205.00	BT132
142mm - \$220.00	BT142
152mm - \$235.00	BT152
162mm - \$250.00	BT162
172mm - \$270.00	BT172
175mm - \$275.00	BT175
182mm - \$285.00	BT182
200mm - \$320.00	BT200
225mm - \$420.00	BT225
245mm - \$500.00	BT245
250mm - \$520.00	BT250
285mm - \$570.00	BT285
300mm - \$660.00	BT300
325mm - \$700.00	BT325
350mm - \$740.00	BT350
400mm - \$780.00	BT400
450mm - \$820.00	BT450
500mm - \$870.00	BT500
550mm - \$920.00	BT550
600mm - \$950.00	BT600



# CORE BARRELS

## SHORT CORE BARRELS

Quality laser welded & brazed core drill barrels in 150 or 250mm length. Standard 1 1/4" UNC thread.



Diameter:	Length:	Code:
22mm \$43	150/250mm	BT22S
25mm \$48	150/250mm	BT25S
30mm \$50	150mm	BT30S
32mm \$52	150/250mm	BT32S
38mm \$54	150mm	BT38S
42mm \$61	250mm	BT42S
52mm \$74	250mm	BT52S
62mm \$82	250mm	BT62S
63mm \$76	150mm	BT63S
66mm \$80	150mm	BT66S
67mm \$87	250mm	BT67S
77mm \$105	250mm	BT77S

Diameter:	Length :	Code:
82mm \$110	250mm	BT82S
83mm \$99	150mm	BT83S
92mm \$117	250mm	BT92S
102mm \$130	250mm	BT102S
107mm \$135	250mm	BT107S
108mm \$122	150mm	BT108S
117mm \$139	250mm	BT117S
122mm \$141	250mm	BT122S
127mm \$145	250mm	BT127S
132mm \$157	150/250mm	BT132S
152mm \$193	250mm	BT152S

## 1M LONG COREBARRELS

Quality laser welded & brazed core drill barrels in 1 metre length. Standard 1 1/4" UNC thread.



Diameter:	Code:
20mm - \$110	BT20M
25mm - \$113	BT25M
28mm - \$115	BT28M
32mm - \$120	BT32M
38mm - \$125	BT38M
45mm - \$133	BT45M
50mm - \$140	BT50M
62mm - \$155	BT62M
66mm - \$165	BT66M
76mm - \$185	BT76M

Diameter:	Code:
82mm - \$195	BT82M
90mm - \$215	BT90M
102mm - \$245	BT102M
108mm - \$260	BT108M
114mm - \$300	BT114M
117mm - \$310	BT117M
120mm - \$330	BT120M
127mm - \$350	BT127M

## PREMIUM ARIX COREBARRELS

Smarts range of genuine ARIX premium laser welded core drill barrels. Extra fast cutting and long-life. Standard barrel length is 450mm. Standard 1 1/4" UNC thread. Please enquire about any size not listed below.



Diameter:	Code:
18mm - \$110.00	ARIX18
25mm - \$125.00	ARIX25
32mm - \$135.00	ARIX32
52mm - \$145.00	ARIX52
64mm - \$169.00	ARIX64
76mm - \$189.00	ARIX76
84mm - \$199.00	ARIX84
102mm - \$235.00	ARIX102
117mm - \$270.00	ARIX117
127mm - \$295.00	ARIX127



# CORE DRILL ADAPTORS

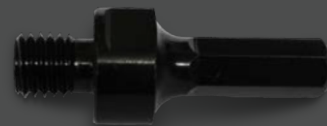
## 1/2BSP - \$105.00

Standard drill chuck to 1/2" BSP with water feed (water jacket). Comes with interchangeable 13mm Hex, SDS Plus & SDS Max shanks.



## M14-HEX - \$7.00

M14 to 13mm hex shank.



## BSP10 - \$21.00

1/2" BSP (male) to 10mm straight shank with allen key grub screws. For use with Auskut "DD" range of blind drill bits.



## OX-JN56 - \$33.00

1/2" BSP (female) to 1/2" BSP (female).



## BSPM14 - \$21.00

M14 (female) to 1/2" BSP (female) Adapt the Auskut BSP10 to fit on a variable speed M14 spindle wet polisher.



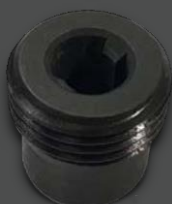
## OX-JN66 - \$82.00

1/2" BSP (female) to 1 1/4" UNC (female).



## BSP-SDS - \$31.00

1/2" BSP male to SDS Plus female. Allows for an SDS Plus drill bit to be used as a pilot drill bit when used in a core drill machine that has both a female 1/2" BSP & 1 1/4" male threaded spindle.



## UNC-BSP - \$31.00

1 1/4" UNC (male) to 1/2" BSP (male).



## UNC-HEX - \$33.00

1 1/4" UNC to 13mm hex shank.



## HILTIUNC - \$69.00

1 1/4" UNC adaptor to suit HILTI.



## UNC-SDS - \$35.00

1 1/4" UNC to SDS plus shank.



## To suit HILTI

Special order adaptors to suit Hilti machines available.





## CORE BARREL REMOVER

Removes stubborn stuck core drill barrels. Thread the rod through the hub, lock the hex nuts and turn with a wrench - will pull the barrel from the hole without damaging it! 1 metre long with 1 1/4" thread.



## CORE BARREL EXTENSIONS

Gain that extra depth when you need it! 45mm diameter extensions for core barrels. 1 1/4" UNC male and female fittings allowing joining of multiple extensions.



Length:	Code:
200mm - \$39.00	EXT20
300mm - \$52.00	EXT30
500mm - \$80.00	EXT50

## CORE DRILL DIAMOND SEGMENTS

Loose diamond segments for core drill barrels. Crown segments for smaller sized core barrels, individual segments for larger.



To Suit Diameter:	Code:
16mm Crown - \$9.00	LooseT16
18mm Crown - \$10.00	LooseT18
20mm Crown - \$11.00	LooseT20
22mm Crown - \$12.00	LooseT22
25mm Crown - \$13.00	LooseT25
30mm Crown - \$15.00	LooseT30
35mm Crown - \$19.00	LooseT35
50-59mm - \$8.00	CDSL50
60-79mm - \$8.00	CDSL65
80-109mm - \$8.00	CDSL100
110-139mm - \$9.00	CDSL125
140-169mm - \$9.00	CDSL165
170-230mm - \$11.00	CDSL220
240-350mm - \$11.00	CDSL300
400-600mm - \$11.00	CDSL400

## CORE DRILL ACCESSORIES



### VACUUM PUMP VACP - \$595.00

Dry rotary vacuum pump for use with our vacuum pad (VACPAD) and core drill rigs. Use the pad and pump in place of anchor bolts to hold down your core drilling equipment.



### VACUUM PUMP BYVACP - \$1,195.00

Oil free air vacuum pump for use with our vacuum pad (BYVACPAD) and core drill rigs. Portable and powerful with 120L/min airflow. Install your core drill stand onto the floor, wall or any smooth surface.

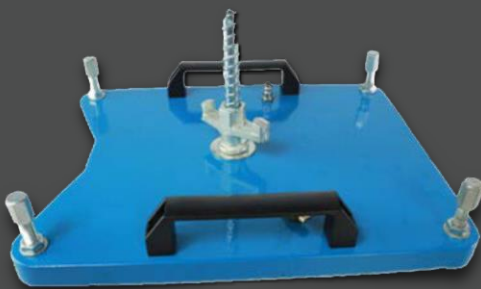


### VACUUM PAD VACPAD - \$195.00

High strength aluminium pad for use with our core drill rigs and vacuum pump (VACP).

Power:	1/6HP
Speed:	1L/sec, 2800rpm
Pressure:	1.5 x 10000pa
Weight:	7.3kg
Dimensions:	232x147x235mm

Power:	780W
Speed:	1400rpm
Max Pressure:	8bar
Weight:	21kg
Dimensions:	440x250x440mm



### VACUUM PAD BYVACPAD - \$285.00

High strength aluminium vacuum pad for use with our core drill rigs and vacuum pump (BYVACP). Includes M12 anchor setting tool. Suction strong enough for core drilling with diameter of less than 400mm.



### VACUUM WATER COLLECTOR PADS VACWCP - \$109.00

Full set of vacuum water collector pads to suit sizes 45mm, 55mm, 65mm, 76mm, 110mm and 130mm. This device adheres to the wall or floor by vacuum suction (attach wet vac) and effectively collects the dust/water at the source.



### DUST EXTRACTOR SUCTION GUIDE DEXSG - \$24.00

Connects to a vacuum cleaner with a hose outlet of 32-37mm for dust free drilling. Can be used with drills to a maximum diameter of 65mm.

## POWERS ANCHORS ANCHOR12L - \$179.00

Anchors enable secure fastening of your core drill rig, which is essential to ensure a straight core. Powers' lipped drop-in anchors (bucket) contains 300 x M12 x 50mm anchors, 2 x drill bits and 1 x setting tool.



## ANCHOR BOLTS

Anchor bolts are used to fasten core drill rigs to the surface prior to drilling. M12 threaded base with coarse thread on top to allow fast tightening of the rig.



Description:	Code:
Budget anchor bolt	CDBolt - \$65
Eibenstock anchor bolt (stand tightening screw) including nut, washer and impact dowel	AnchorBoltE - \$55
Standard anchor bolt	AnchorBolt - \$45
Premium anchor bolt	AnchorBoltW - \$159



# HAMMER DRILLS



## **Metabo KHE3251 - \$600.00**

Combination rotary hammer drill SDS+

Industrial quality rotary hammer drill with 3 functions - hammer drilling, drilling and chiselling. Features a quick change fitting from the SDS+ hammer chuck and the included quick-action keyless chuck. The Metabo Marathon motor with patented dust protection offers longer service life over most competitor brands.

Max drill diameter: concrete with hammer bits 32mm, masonry with core bits 80mm, steel 13mm, soft wood 35mm.

Motor:	800W
Rated Speed:	0-1150rpm
Max Impact Rate:	4470bpm
Max Impact Energy:	3.1J
Weight:	3.6kg



## **Metabo KHE5-40 - \$800.00**

Combination rotary hammer drill SDS-Max

Combination hammer with 2 modes - hammer drilling and chiselling. Features integrated damping system, maintains constant speed under load, soft start plus S-automatic safety clutch.

Max drill diameter: concrete with hammer bits 40mm, masonry with core bits 90mm.

Motor:	1010W
Rated Speed:	200-350rpm
Max Impact Rate:	3200bpm
Max Impact Energy:	7.5J
Weight:	6.2kg

## SMALL TILE DRILL BITS

Vacuum brazed diamond tip drill bits suitable for use on hard materials such as porcelain and ceramic tiles. M14 thread for use on a 5" angle grinder.



Size:	Code:
6mm - \$20.00	VB6
8mm - \$30.00	VB8
10mm - \$31.00	VB10
12mm - \$32.00	VB12
14mm - \$35.00	VB14
16mm - \$36.00	VB16
18mm - \$37.00	VB18
20mm - \$38.00	VB20
22mm - \$39.00	VB22
25mm - \$42.00	VB25
28mm - \$45.00	VB28
32mm - \$47.00	VB32
35mm - \$50.00	VB35
40mm - \$59.00	VB40
45mm - \$64.00	VB45
50mm - \$68.00	VB50
60mm - \$71.00	VB60
68mm - \$83.00	VB68
75mm - \$85.00	VB75
82mm - \$90.00	VB82

## BLIND DIAMOND DRILL BITS

Blind diamond tip drill bits for wet drilling of all hard materials e.g. granite. 10mm round shank. 100mm in length. Adaptor to convert to M14 available.



Size:	Code:
6mm - \$6.00	DD6
8mm - \$7.00	DD8
10mm - \$8.00	DD10
12mm - \$9.00	DD12

## SDS-PLUS CONCRETE DRILL BITS

Concrete/masonry drill bits suitable for use on SDS+ rotary hammer drills.



Size:	Code:
6mm x 160mm - \$2.50	SDS6
8mm x 160mm - \$3.00	SDS8
10mm x 210mm - \$4.00	SDS10
12mm x 210mm - \$4.50	SDS12
14mm x 210mm - \$7.00	SDS14
16mm x 210mm - \$8.00	SDS16
18mm x 210mm - \$10.00	SDS18
20mm x 260mm - \$13.00	SDS20
22mm x 260mm - \$16.00	SDS22
24mm x 260mm - \$19.00	SDS24
25mm x 260mm - \$19.50	SDS25

## BORDO SDS+ REBAR CUTTERS

Specifically designed for cutting through rebar in reinforced concrete. 305mm OAL. Available in the following metric sizes: 10, 12, 14, 16, 18, 20, 22, 24, 28, 30mm. Also available in the following imperial sizes: 5/8, 11/16, 3/4, 13/16, 1".



## BORDO SDS+ X-BITS

Drill faster and longer than standard two edge rotary hammer bits. Suitable for use in concrete, high MPA concrete hard aggregate, masonry, hard stone, brick. Available in 110mm, 160mm, 210mm, 260mm, 310mm, 450mm and 600mm OAL. Various sizes available between 5-25mm - contact us for more details.

